

# SCOOTER S200

ELECTRICPORTER

**FANTOZZI**

moving safe. at work



## General features and advantages

FANTOZZI scooter S200 is an electric scooter studied to allow the operators to move on long industrial surfaces when he needs to move, to tow goods or to tow working tools. S200 assures the maintenance people to move quickly and safely for a prompt service to the machineries.

### Intensive use

The high numbers of scheduled working handlings and meanwhile the unexpected emergencies and precision, need reliable tools always versatile and available to carry-out continuous work granting high quality levels.

Slim and strong S200 is suitable to drive into small and complex ways; working proof resistant inside the stocking area and factories on flat floors.

### Increase on productivity

S200 answers the modern concept of logistic and goods handling which require more and more skilled and dedicated working instruments suitable to reach the best compromise between working time, working quality & precision, and operator's safety & satisfaction.

During handling of unpacked goods or single pieces – without pallets or loading units – the S200 electricporter produces a significant increase in productivity, it means much more work arranged shortly and saving of human resources.

### Driving comfort

The Scooter has a comfortable driving position, easy access to the operating control unit, limited height of the platform and comfortable adjustable seat (optional): these allow the operator to drive longtime on safety and correct position, in accordance with ergonomic standards.

Accessories such as book-holder or wire basket make the daily operations easier.

The driving position answers the many handling needs and frequent stops; getting-off and getting-on the vehicle several times.



Maximum safety for operator, goods and environment  
The modern concept of safety is not only limited to the operator but to the complete "system": operator, goods, environment.

FANTOZZI S200 is studied in accordance with current regulations as for accident-prevention, limited vibrations, industrial health, common protection etc, but mainly thinking on ethic responsibility and reliability as for working satisfaction and appreciation of human resources.

# Technical / manufacturing features

## Motor

Scooter S200 is equipped with one 300W motor - Speed 10 Km/h – Loading capacity up to 200 Kg. – Towing capacity 100 Kg. max.



## Motorization

Possibility to choose 3 reduction ratios: it depends on max. grade and max. speed on long courses.

## Chassis

Strong structure made of Fe37 with black embossing non-scratch epoxy painting. The structure reinforcements guarantee the maximum vehicle's reliability.



## Electronic control unit

The electronic control unit allows the speed, braking, acceleration adjustments: these parameters customize the use of Scooter S200.

## Battery

Two hermetic traction batteries 12V 51Ah (no maintenance) with 6 hours endurance. All kinds of mounted batteries do not release fumes during the charge.



## Built-in battery charger

Built-in inside the vehicle, it allows everywhere quickly recharge and without additional costly devices.

### Service brake

The scooter stops gradually by releasing the manipulator: the motor has a gradual counterbrake and finally the service brake enters automatically.



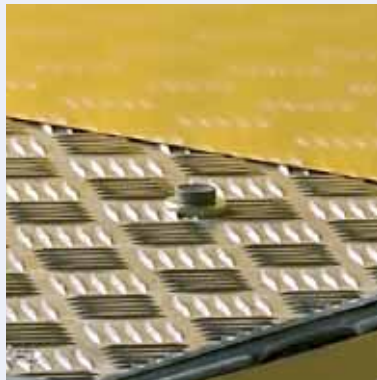
### Emergency brake

The brake lever placed on left manipulator makes the emergency braking.

The emergency braking is necessary to avoid accidents inside the factory.

### Driver detection sensor

On driving platform there is a pedal: if pressed it moves the machine, if released it assures the machine stop on total safety.



### Control unit

Intuitive, simple and effective, it includes:

- Forward and backward speed button
- Light switch
- Charge indicator display
- Warning buzzer
- Emergency button (to stop the vehicle immediately)
- Starting key.

### Design

FANROZZI S200 scooter has modern and practical design.

The rounded lines make the vehicle comfortable, safe and reliable.

The front lamp lights the way when dark.



### Puncture-proof wheels

The S200 electricporter is equipped with puncture-proof wheels.

Tyres are made of a special mix of super-elastic rubber which guarantees the maximum driving safety.



## Optionals

Front wheel guard  
Iron bar: rust-proofing treatment, powder painting.



Seats  
Double-tube or rectangular structure, both complete with anatomic leather saddle.



Book holder  
Plastic transparent structure with sheets clip and fixing screws.



Towing hook  
Painted iron towing hook complete with bolts and nuts for fixing



Wire basket  
Wire basket made of chromate rust-proofing stainless-steel.



Basket support  
Strong iron structure with side reinforcements

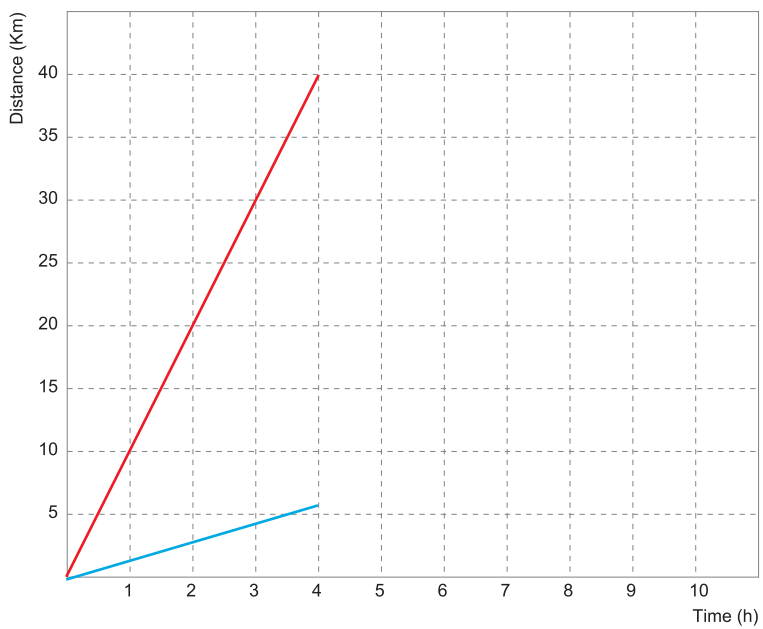
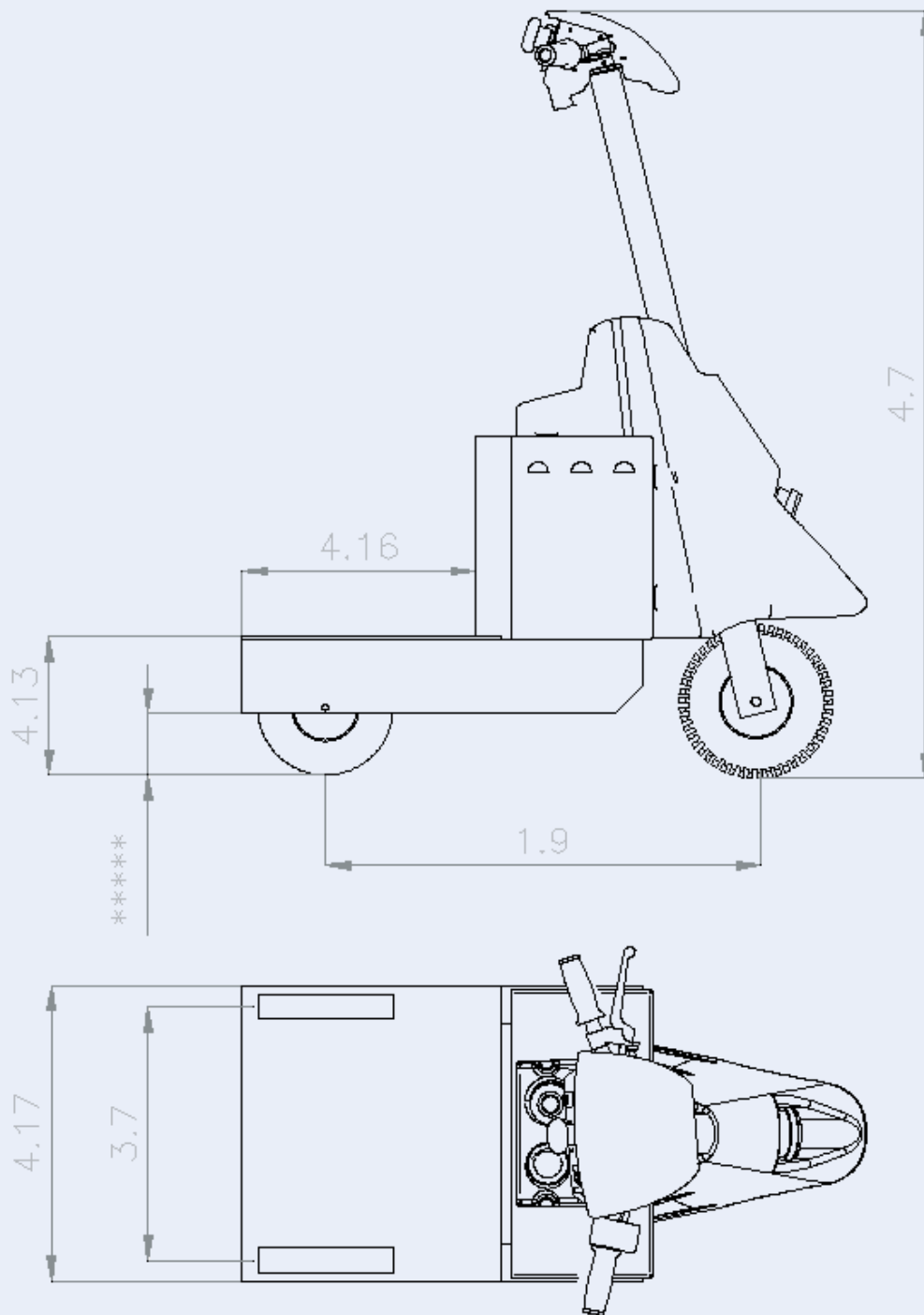


# Technical features

VDI 2198

Features	1.1	Manufacturer	Fantozzi		
	1.2	Model	S200		
	1.3	Traction	Elettrica		
	1.4	Type of driving	A bordo in piedi		
	1.5	Loading capacity	Q (t)	2	
Weights	1.9	Wheel axis	y (mm)	720	
	2.1	Weight including batteries	Kg	127	
Wheels / structure	3.1	Tyres (superelastic, pneumatic..)	SE		
	3.2	Front wheel dimensions	3.00 - 4		
	3.3	Rear wheel dimensions	Ø 225 x 80		
	3.5	Front wheel number (X=traction)	1		
	3.5.1	Rear wheel number (X=traction)	2		
	3.7	Rear wheel track	b <sub>11</sub> (mm)	425	
	Basic dimensions	4.7	Operator's protection height (cab)	h <sub>6</sub> (mm)	1210
4.8		Operator's seat height (cab)	h <sub>6</sub> (mm)	/	
4.12		Towing hook height	h <sub>10</sub> (mm)	120	
4.13		Platform height (without loading)	h <sub>11</sub> (mm)	230	
*****		Clearance	h <sub>11</sub> (mm)	110	
4.16		Loading platform length	l <sub>3</sub> (mm)	380	
4.17		Loading platform width	b <sub>9</sub> (mm)	520	
4.19		Total length	l <sub>1</sub> (mm)	1020	
4.21		Total width	b <sub>1</sub> (mm)	520	
		Working aisle width	(mm)	750	
		Intersecting aisle width	(mm)	1600	
		Minimum rack width between 2 working aisles	(mm)	800	
		90° Turning radius	(Wa mm)	2230	
* Performances	5.1	Driving speed with full loading	1:11	13 km/h	5%
			1:16	8,5 km/h <b>STD</b>	9%
			1:22	6 km/h	12%
	5.1.1	Driving speed without loading	1:11	13 km/h	5%
			1:16	8,5 km/h <b>STD</b>	9%
			1:22	6 km/h	12%
	5.8	Max. grade with full loading	1:11	13 km/h	5%
			1:16	8,5 km/h	9% <b>STD</b>
			1:22	6 km/h	12%
	5.10	Service brake	Electromechanical + Mechanical		
5.11	Parking brake	Electromechanical			
	Emergency brake	Electromechanical			
	Driver detection sensor	Mechanical			
Electric motor	6.1	Traction motor – capacity KB 60 min	kW	0,3	
	6.3	Battery	12V 51Ah		
	6.4	Battery tension	U V	12V	
	6.4.1	Battery capacity	K 5 Ah	51Ah	
	6.5	Battery weight	Kg	2 x 22,5	
Others	8.1	Kind of transmission	1:11	13 km/h	5%
			1:16 <b>STD</b>	8,5 km/h	9%
			1:22	6 km/h	12%
	8.4	Average noise for the operator	dB (A)	< 70	
	8.5	Towing hook	Manual		
	8.6	Steering gear	Mechanical		
	Vibrations to the operator	< 2,5 m/s <sup>2</sup>			

\* the performances refer to the vehicle in perfect conditions, with charged battery and regular motor maintenance



## Easy and safe movement Production increased

A scooter thought for maintenance people FANTOZZI electricporter S200 allows maintenance people to reduce the service time for the industrial machines, mainly when the travelling distance is very long and the maintainer has to tow his service tool set.

— man walking and towing a tool case  
— S200

# Safe working. You can! You must!

## ELECTRICPORTER RANGE 2007



TRACTORS



PLATFORMS



SCOOTERS



HOSPITAL



EC CERTIFICATION



IN ACCORDANCE WITH 626 LAW



1000 Kg. MAXIMUM LOADING



80 cm. WAY WIDTH



2500 Kg. TOWING CAPACITY

# FANTOZZI

moving safe. at work

Fantozzi Electric Carts S.r.l.  
Via Rosa Luxemburg, 24  
42010 Rio Saliceto (RE) - Italy  
Tel. +39 0522 647192  
Fax +39 0522 699479  
info@fantozzi.com  
sales@fantozzi.com  
www.fantozzi.com