



EEx-Products

EEx-Products



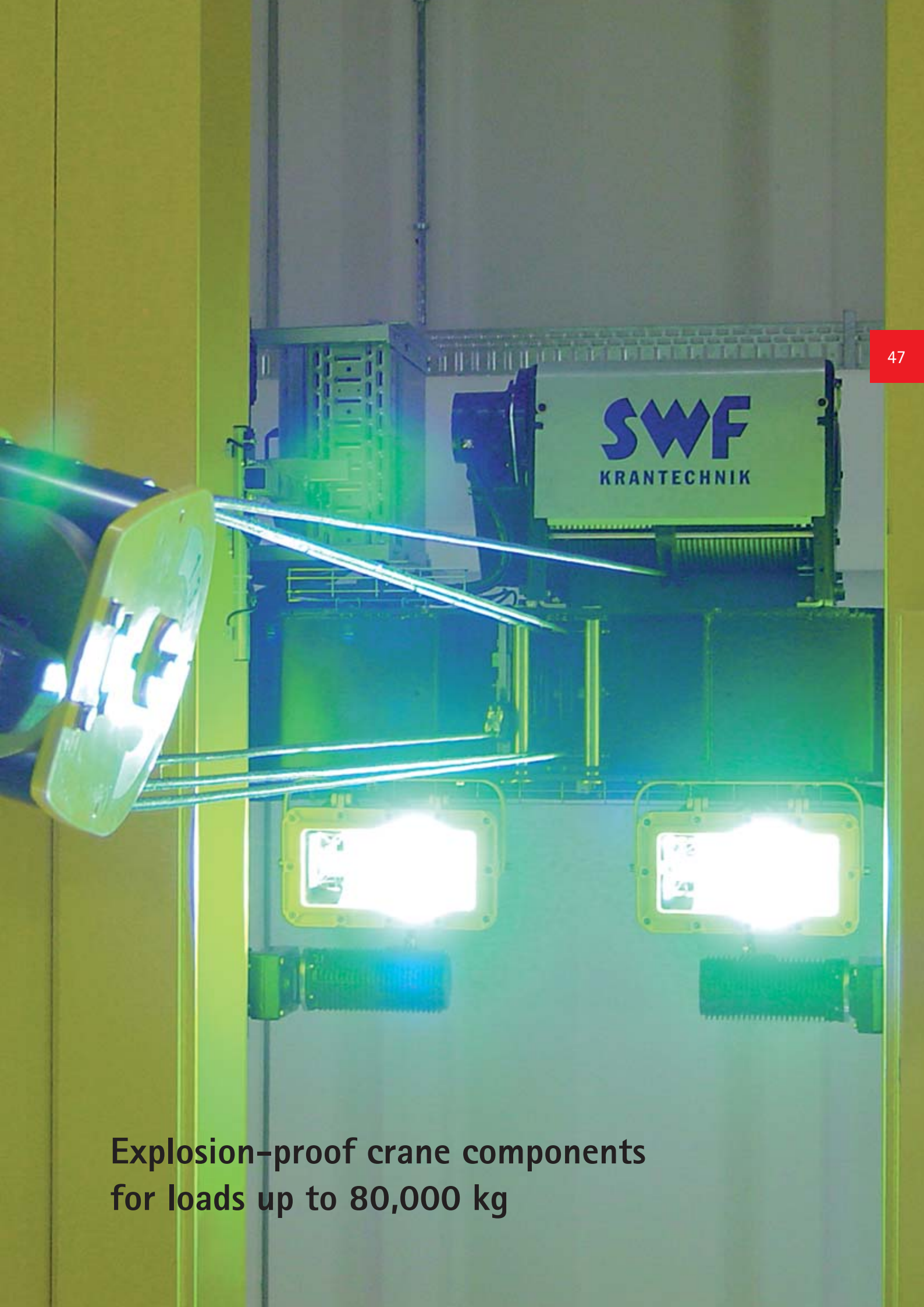
- **Maximum operational reliability**
Design approved components, motor protection IP66, electrical cubicle protection IP65 and as an option bronzed parts to give additional protection
- **Optimum use of space**
Compact design and optimum approach dimensions
- **Numerous usage possibilities**
Available as an electric chain hoist, electric wire rope hoist or crane component package

Advantage: Top performance with the greatest possible safety

Explosion proof crane components from SWF deliver the goods.

Our complete quality assurance programme together with our strict production controls, guarantee the highest possible standard of safety for all of our components.

Explosion proof crane components from SWF distinguish themselves – just like the basic NOVA models – because of their high performance motors, compact design and approach dimensions as well as their tremendous longevity.

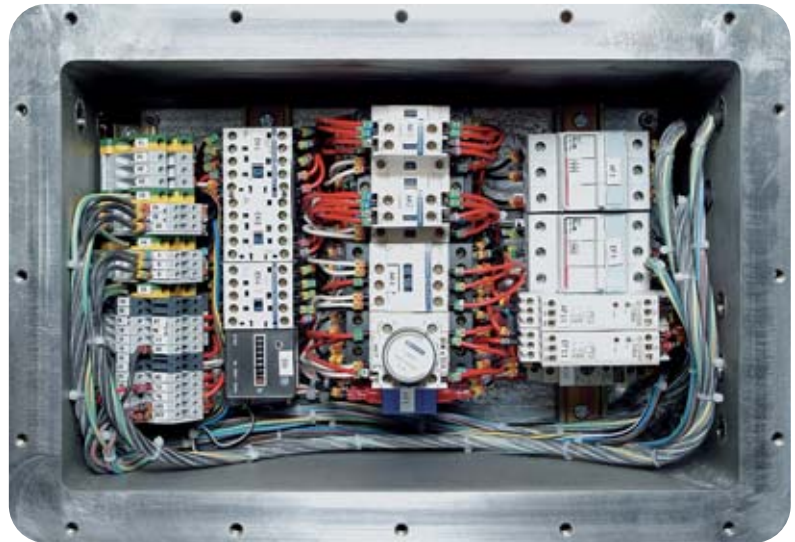


**Explosion-proof crane components
for loads up to 80,000 kg**



The special components offered by SWF for use in explosion proof atmospheres fulfil the highest of safety standards. The products range from a simple electric chain hoist to a complete electrical crane kit.

EEx-Products



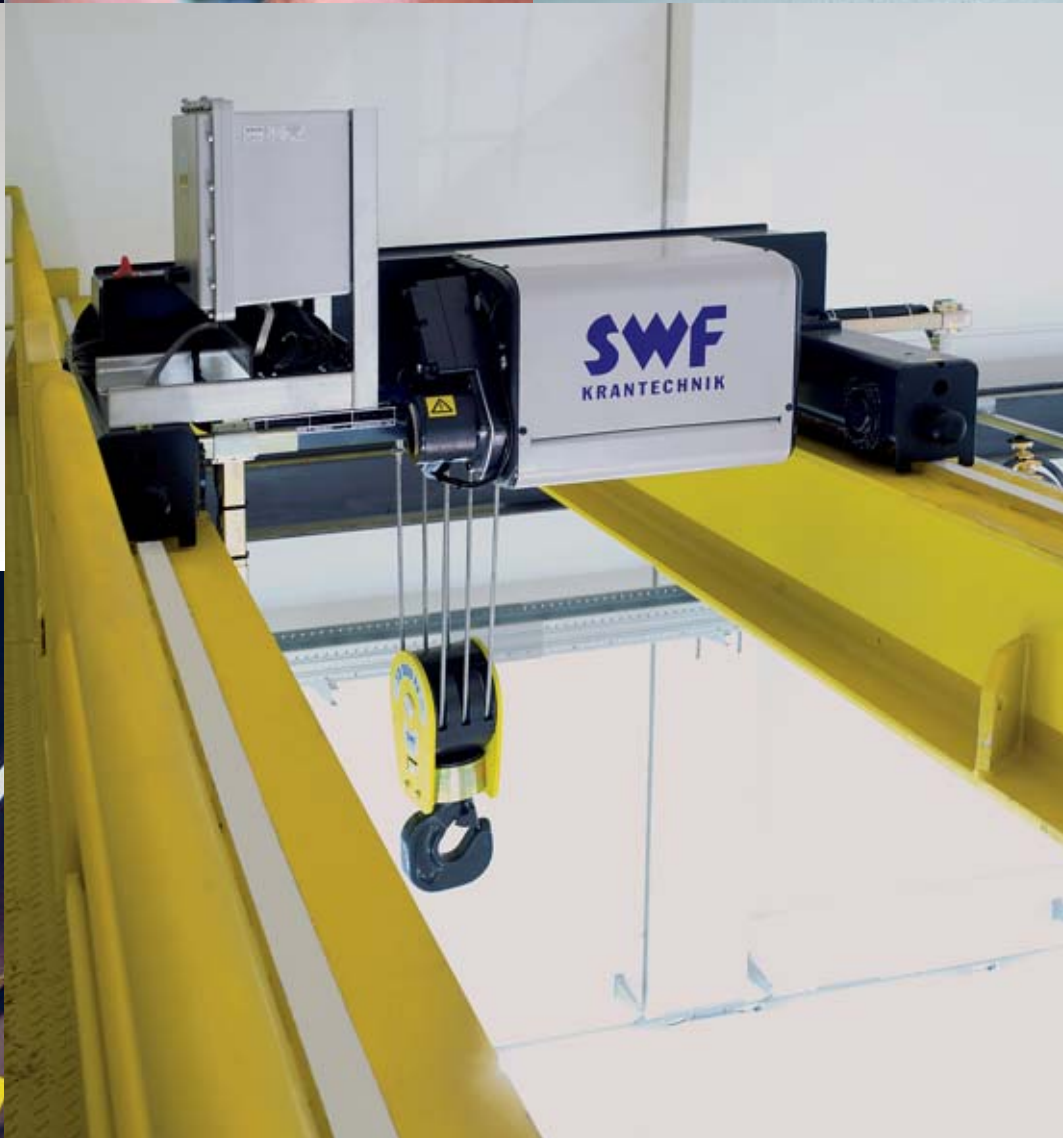
The use of modern frequency inverter technology for crane and trolley travelling with explosion-protected component packages ensures gentle transporting of loads and low-wear operation of the crane.

At SWF you can get explosion proof components, suitable for the following groups:

- ATEX II2G EEx cde IIB T4, Zone 1
- ATEX II2G EEx cde IIC T4, Zone 1
- ATEX II3G EEx nA II T3, Zone 2
- ATEX II2D EEx cde IIB T4 IP65, Zone 21
- ATEX II3D IP55 135 °C, Zone 22

Explosion proof crane components from SWF correspond to the guidelines according to ATEX 94/09/EG, the regulations of FEM and the European safety standards (EN). SWF EEx-Products are certified within the bounds of design approval (INERIS 03 ATEX 3015 X).

EEx-Products



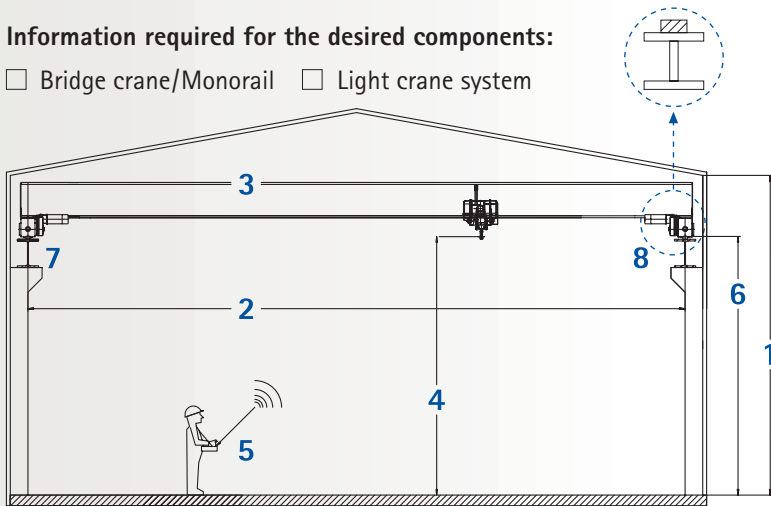
Company: _____ Date: _____

Contact Person: _____ Phone: _____

eMail: _____ Fax: _____

Information required for the desired components:

- Bridge crane/Monorail Light crane system



Building dimensions:

1 Building height: _____ mm

2 Crane span/Monorail length: _____ mm

3 Beam width: _____ mm

4 Lifting height: _____ mm

5 Remote control: Yes No

6 Top edge height of crane rail: _____ mm

7 Runway rail length: _____ mm

8 Runway rail: _____ x _____ mm

Crane type

Safe working load

- Single girder crane: _____ kg
- Double girder crane: _____ kg
- Underslung crane: _____ kg
- Monorail: _____ kg

Hoist: Chain hoist Wire rope hoist

Power supply: 400 V/50 Hz _____ V / _____ HZ

Control voltage: 48 V 115 V 230 V

Duty group: Fem 1Bm (M3) 1Am (M4) 2m (M5) 3m (M6)

Hoist power feeding line: Flat cable Energy chain (Remote Control needed)

Ambient conditions:

Utilisation indoors outdoors under roof outdoors

Ambient temperature +5°C up to +40°C

From: -20°C -10°C 0°C **up to:** +40°C +55°C

High humidity ≥ 90% Dusty (non explosive)

Explosion proofed  **Gas** Zone 1 IIB T4 Zone 1 IIC T4 Zone 2 IIB T3 Zone 2 IIC T3

Dust Zone 21 IP65 T+135°C Zone 22 IP55 T+155°C

Additions for

ProfileMaster LIGHTster

Light Crane System

Suspension distance _____ mm Suspension type _____