

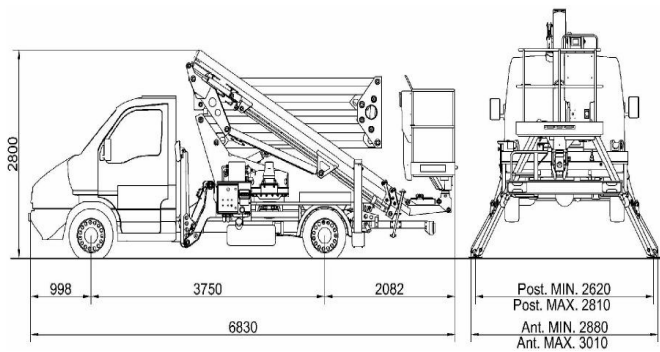
SPECIFICATION

ZED 20L on Iveco Daily

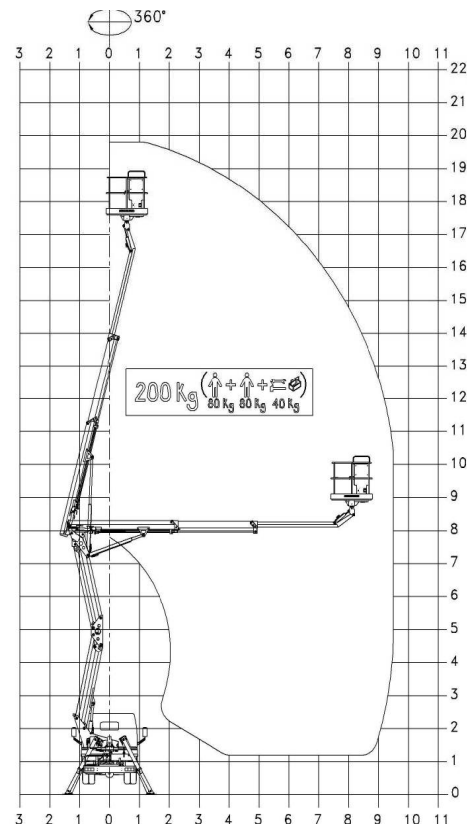
TECHNICAL DATA

- Double pantograph + telescopic boom (main boom + two extensions)
- Sigma boom movement enabled by connecting rods
- 360° continuous turret rotation on bearing turntable
- Proportional electro-hydraulic commands controls in basket and ground
- Engine start and stop from basket and from ground
- Antislip aluminium flatbed decking with tool tray walls
- Basket base in composite material with aluminium guardrails
- Basket load sensing device
- 65° Right + 65° Left hydraulic basket rotation
- Automatic hydraulically actioned basket levelling
- N°4 hydraulic outrigger with ground pressure cont act
- Hydraulic system operated by vehicle's PTO
- Buzzer indicating when PTO engaged
- Hour meter
- 1 flashing beacon
- 230V AC EC electrical socket in the basket
- Standard blue (RAL 5017) or white (RAL 9010) paint work
- CE certified

DIMENSIONS



WORKING ENVELOPE



PERFORMANCE

| | |
|------------------|-----------------|
| Working height | 19,8m |
| Platform height | 17,8m |
| Working outreach | 9,5m |
| Capacity | 200kg |
| Basket dim. | 1400x700x1100mm |
| GVW minimum | 3,5t |

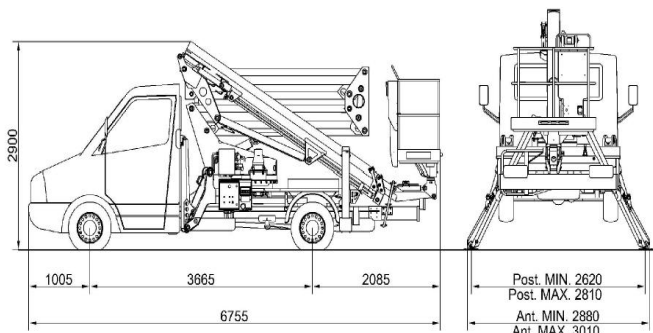
SPECIFICATION

ZED 20L on Mercedes Sprinter

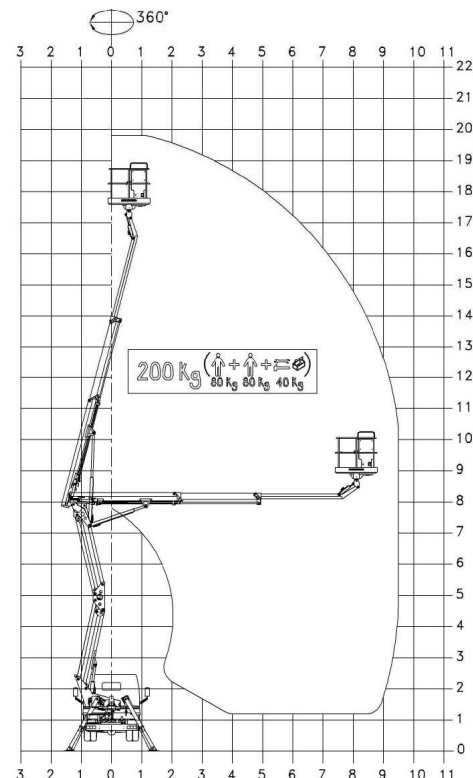
TECHNICAL DATA

- Double pantograph + telescopic boom (main boom + two extensions)
- Sigma boom movement enabled by connecting rods
- 360° continuous turret rotation on bearing turntable
- Proportional electro-hydraulic commands controls in basket and ground
- Engine start and stop from basket and from ground
- Antislip aluminium flatbed decking with tool tray walls
- Basket base in composite material with aluminium guardrails
- Basket load sensing device
- 65° Right + 65° Left hydraulic basket rotation
- Automatic hydraulically actioned basket levelling
- N°4 hydraulic outrigger with ground pressure cont act
- Hydraulic system operated by vehicle's PTO
- Buzzer indicating when PTO engaged
- Hour meter
- 1 flashing beacon
- 230V AC EC electrical socket in the basket
- Standard blue (RAL 5017) or white (RAL 9010) paint work
- CE certified

DIMENSIONS



WORKING ENVELOPE



PERFORMANCE

| | |
|------------------|-----------------|
| Working height | 19,8m |
| Platform height | 17,8m |
| Working outreach | 9,5m |
| Capacity | 200kg |
| Basket dim. | 1400x700x1100mm |
| GVW minimum | 3,5t |