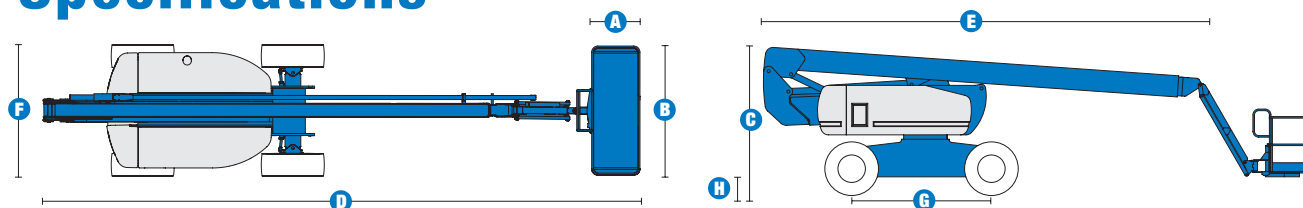


## Specifications



### MODEL Z™-80/60

MEASUREMENTS	US	Metric
Working height maximum*	86 ft	26.38 m
Platform height maximum	80 ft	24.38 m
Horizontal reach maximum	60 ft	18.29 m
Up and over clearance maximum	29 ft	8.83 m
Below ground reach	15 ft 10 in	4.83 m
<b>A</b> Platform length - 8 ft / 6 ft / 5 ft / 4 ft	3ft/2ft6in/2ft6in/2ft6in	.91m/.76m/.76m/.76m
<b>B</b> Platform width - 8 ft / 6 ft / 5 ft / 4 ft	8ft/6ft/5ft/4ft	2.44m/1.83m/1.52m/1.22m
<b>C</b> Height - stowed	9 ft 10 in	3.00 m
<b>D</b> Length - stowed	37 ft	11.27 m
<b>E</b> Length - transport	30 ft	9.14 m
<b>F</b> Width	8 ft 2 in	2.49 m
<b>G</b> Wheelbase	9 ft 4 in	2.85 m
<b>H</b> Ground clearance - center	12 in	.30 m

### PRODUCTIVITY

Lift capacity	500 lbs	227 kg
Platform rotation	160°	
Vertical jib rotation	135°	
Turntable rotation	360° continuous	
Turntable tailswing - riser up	3 ft 10 in	1.17 m
Turntable tailswing - riser down	7 ft 4 in	2.24 m
Drive speed - stowed	3.0 mph	4.83 km/h
Drive speed - raised**	0.68 mph	1.1 km/h
Lift speed to full height	76 sec	
Gradeability - 2WD - stowed***	30%	
Gradeability - 4WD - stowed***	45%	
Turning radius - 2WS inside	14 ft 6 in	4.42 m
Turning radius - 2WS outside	24 ft 6 in	7.47 m
Turning radius - 4WS inside	7 ft	2.13 m
Turning radius - 4WS outside	15 ft	4.57 m
Controls	12 V DC proportional	
Tires	18-625 NHS	

### POWER

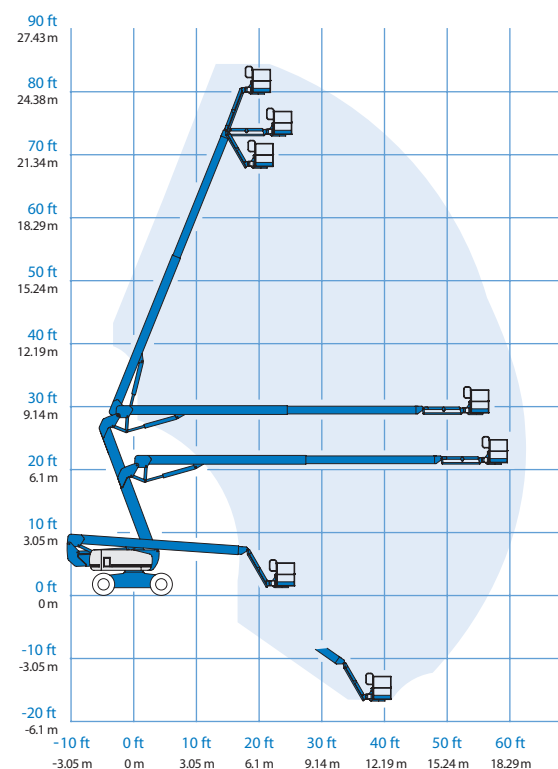
Power source	Deutz BF4L 2011 4 cylinder diesel 78 hp (58 kW) Perkins 804C-33 4 cylinder diesel 63 hp (47 kW) Continental TME27 4 cylinder gas/LPG 74 hp (55 kW)
Auxiliary power unit	12 V DC
Hydraulic tank capacity	45 gal 170 L
Fuel tank capacity	35 gal 132 L

### WEIGHT\*\*\*\*

2WS	35,900 lbs	16,284 kg
4WS	37,500 lbs	17,010 kg

### STANDARDS COMPLIANCE ANSI A92.5, CSA B354.4, CE Compliance, AS 1418.10

### RANGE OF MOTION Z™-80/60



\* The metric equivalent of working height adds 2 m to platform height. U.S. adds 6 ft to platform height.

\*\* In lift mode (platform raised), the machine is designed to operate on firm, level surfaces only.

\*\*\* Gradeability applies to driving on slopes. See operator's manual for details regarding slope ratings.

\*\*\*\* Weight will vary depending on options and/or country standards.

## Features

### EASILY CONFIGURED TO MEET YOUR NEEDS

#### PLATFORM OPTIONS

- Steel 8 ft (2.44 m) (standard)
- Steel 6 ft (1.83 m)
- Steel 6 or 8 ft (1.83 or 2.44 m) tri-entry
- Steel 4 ft (1.22 m)
- Steel 5 ft (1.52 m)

#### JIB

- 6 ft (1.83 m) jib boom

#### POWER OPTIONS

- Deutz diesel 78 hp (58 kW)
- Perkins diesel 63 hp (47 kW)
- Continental gas/LPG 74 hp (55 kW)

#### DRIVE/STEER OPTIONS

- 2WD (standard)
- 4WD
- 2WS (standard)
- 4WS

#### AXLE

- Active oscillation

#### TIRE OPTIONS

- Rough terrain foam-filled (standard)
- Rough terrain non-marking foam-filled
- High flotation rough terrain

### STANDARD FEATURES

#### MEASUREMENTS:

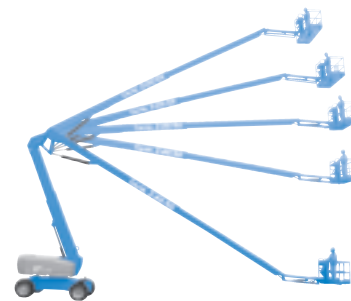
- 86 ft (26.38 m) working height
- 60 ft (18.28 m) horizontal reach
- 29 ft (8.83 m) up and over clearance
- Up to 500 lb (227 kg) lift capacity

#### PRODUCTIVITY

- 6 ft (1.83 m) jib with 135° range
- Self-leveling platform
- Hydraulic platform rotation
- Fully proportional Hall effect controls
- On-board diagnostics
- ALC 1000 electronic control system
- Hydraulic oil cooler
- Drive enable
- AC power cord to platform
- Horn
- Hour meter
- Tilt alarm
- 360° continuous turntable rotation
- Locking turntable covers
- Full-time positive traction drive
- Two speed wheel motors
- Four steering modes: front, rear, crab and coordinated
- Configurable controls to limit lift height to 70 ft

#### POWER

- All engines are emissions compliant
- 12 V DC auxiliary power
- Anti-restart engine protection
- Auto engine fault shutdown
- Engine monitoring display
- Block heater (Continental engine)
- Dual battery



### OPTIONS & ACCESSORIES

#### PRODUCTIVITY

- Platform swing gate
- Half-mesh platform inserts with swing gate
- Platform top auxiliary rail
- Arc Pro 275™ Heavy-Duty Welder package
- Welder Ready package
- Weld leads to platform
- Air line to platform
- Arctic hydraulic oil
- Arctic hose package
- Basic hostile environment kit
- Deluxe hostile environment kit
- Thumb rocker steer
- Deluxe aircraft protection package (6 ft platform only)
- Tool tray
- Fluorescent tube caddy
- Pipe cradles (pair)
- Alarm package
- Panel cradle package\*
- Platform work lights
- Front driving lights
- Lockable platform control box covers

\*Available on select models

#### POWER

- AC Generator Packages (3000 or 3500 watts)
- Cold Start Packages
- Diesel scrubber/spark arrestor
- Diesel spark arrestor muffler
- LPG tank only, steel, 33.5 lb (15.19 kg) capacity
- Additional LPG tank with carrier
- Retained key selector switch

### Genie United States

18340 NE 76th Street  
P.O. Box 97030  
Redmond, Washington 98073-9730

Telephone **(425) 881-1800**  
Toll Free in USA/Canada **800-536-1800**  
Fax (425) 883-3475

### Genie Europe

The Maltings  
Wharf Road  
Grantham NG31 6BH  
U.K.

Telephone **+44 (0)1476 584333**  
Fax +44 (0)1476 584334

Email: [infoeurope@genieind.com](mailto:infoeurope@genieind.com)

### Distributed By:

Effective Date: July, 2007. Product specifications and prices are subject to change without notice or obligation. The photographs and/or drawings in this document are for illustrative purposes only. Refer to the appropriate Operator's Manual for instructions on the proper use of this equipment. Failure to follow the appropriate Operator's Manual when using our equipment or to otherwise act irresponsibly may result in serious injury or death. The only warranty applicable to our equipment is the standard written warranty applicable to the particular product and sale and we make no other warranty, express or implied. Products and services listed may be trademarks, service marks or trade-names of Terex Corporation, Genie Industries, Inc. and/or their subsidiaries in the U.S.A. and many other countries and all rights are reserved. Terex™ is a Registered Trademark of Terex Corporation in the U.S.A. and many other countries. Genie® is a Registered Trademark of Genie Industries, Inc. in the U.S.A. and many other countries. Genie is a Terex Company. Copyright © 2007 Terex Corporation.