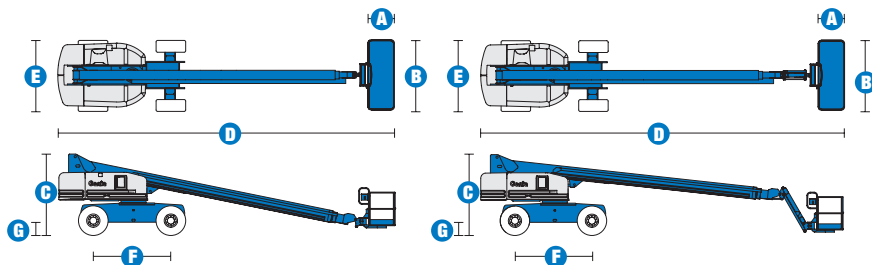


Specifications



| MODELS | S™-80 | | S™-85 | |
|---------------------------------------|------------|---------|------------|---------|
| MEASUREMENTS | US | Metric | US | Metric |
| Working height maximum* | 86 ft | 26.38 m | 91 ft | 27.90 m |
| Platform height maximum | 80 ft | 24.38 m | 85 ft | 25.90 m |
| Horizontal reach maximum | 72 ft 5 in | 22.07 m | 77 ft 5 in | 23.60 m |
| Below ground reach | 10 ft 3 in | 3.12 m | 13 ft 9 in | 4.19 m |
| A Platform length - 8 ft model | 3 ft | .91 m | 3 ft | .91 m |
| Platform length - 6 ft model | 2 ft 6 in | .76 m | 2 ft 6 in | .76 m |
| B Platform width - 8 ft model | 8 ft | 2.44 m | 8 ft | 2.44 m |
| Platform width - 6 ft model | 6 ft | 1.83 m | 6 ft | 1.83 m |
| C Height - stowed | 9 ft 2 in | 2.80 m | 9 ft 2 in | 2.80 m |
| D Length - stowed | 37 ft 3 in | 11.35 m | 40 ft 7 in | 12.37 m |
| Length - transport (jib tucked under) | | | 35 ft | 10.67 m |
| E Width - axles retracted | 8 ft | 2.44 m | 8 ft | 2.44 m |
| Width - axles extended | 10 ft 1 in | 3.07 m | 10 ft 1 in | 3.07 m |
| F Wheelbase | 9 ft | 2.74 m | 9 ft | 2.74 m |
| G Ground clearance - center | 1 ft 5 in | .43 m | 1 ft 5 in | .43 m |

| PRODUCTIVITY | | | | |
|--|---------------------|----------|---------------------|----------|
| Lift capacity - 8 ft platform | 500 lbs | 227 kg | 500 lbs | 227 kg |
| Lift capacity - 6 ft platform | 600 lbs | 272 kg | 500 lbs | 227 kg |
| Platform rotation | 160° | | 160° | |
| Vertical jib rotation | — | | 135° | |
| Turntable rotation | 360° continuous | | 360° continuous | |
| Turntable tailswing - axle retracted | 4 ft 8 in | 1.42 m | 4 ft 8 in | 1.42 m |
| Turntable tailswing - axle extended | 3 ft 8 in | 1.12 m | 3 ft 8 in | 1.12 m |
| Drive speed - stowed - 2WD/4WD | 3.5 mph | 5.6 km/h | 3.5 mph | 5.6 km/h |
| Drive speed - raised/extended | 0.68 mph | 1.1 km/h | 0.68 mph | 1.1 km/h |
| Gradeability - 2WD - stowed** | 30% | | 30% | |
| Gradeability - 4WD - stowed** | 45% | | 45% | |
| Turning radius - axle extended: inside | 10 ft 8 in | 3.25 m | 10 ft 8 in | 3.25 m |
| outside | 23 ft | 7.01 m | 23 ft | 7.01 m |
| Controls | 12V DC proportional | | 12V DC proportional | |
| Tires - RT lug | 385/65 D22.5 | | 385/65 D22.5 | |

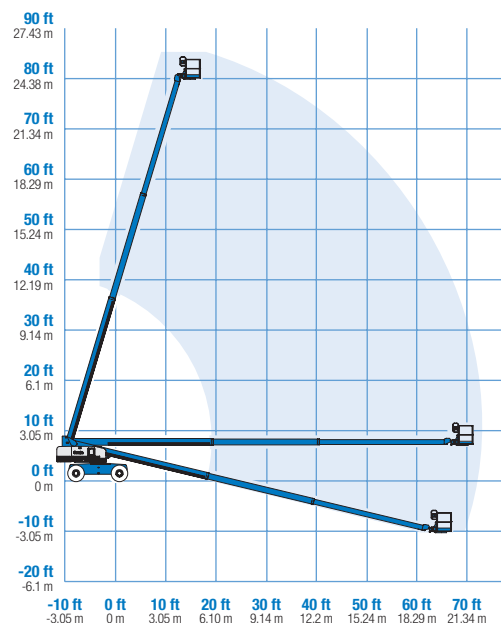
| POWER | | | | |
|-------------------------|--|-------|--------|-------|
| Power source | Deutz BF4L 2011 4 cylinder turbo diesel 78 hp (58.1 kW) Perkins 804C-33 4 cylinder diesel 63 hp (47 kW) Continental TME27 4 cylinder Gas/LPG 74 hp (56 kW) | | | |
| Auxiliary power unit | 12V DC | | 12V DC | |
| Hydraulic tank capacity | 45 gal | 170 L | 45 gal | 170 L |
| Fuel tank capacity | 33 gal | 125 L | 33 gal | 125 L |

| WEIGHT*** | | | | |
|-----------|------------|-----------|------------|-----------|
| 2WD | 33,230 lbs | 15,073 kg | 35,710 lbs | 16,198 kg |
| 4WD | 33,380 lbs | 15,141 kg | 35,860 lbs | 16,266 kg |

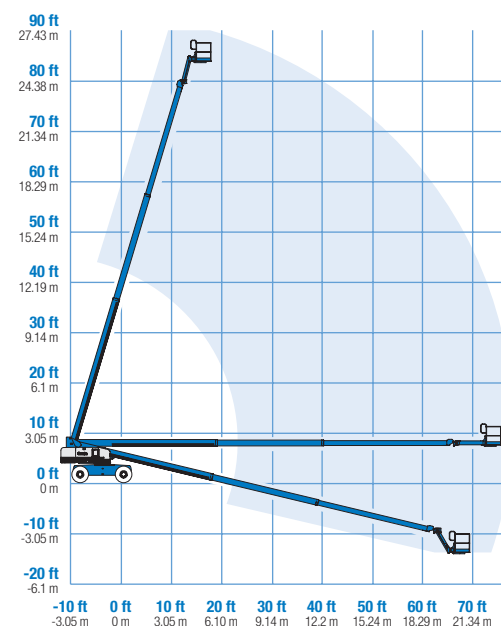
STANDARDS COMPLIANCE ANSI A92.5, CSA B354.4, CE Compliance, AS 1418.10

www.genieindustries.com

RANGE OF MOTION S™-80



RANGE OF MOTION S™-85



* The metric equivalent of working height adds 2 m to platform height. U.S. adds 6 ft to platform height.
** Gradeability applies to driving on slopes. See operator's manual for details regarding slope ratings.
*** Weight will vary depending on options and/or country standards.

Features

EASILY CONFIGURED TO MEET YOUR NEEDS

PLATFORM OPTIONS

- Steel 8 ft (2.44 m) (standard)
- Steel 6 ft (1.83 m)
- Steel 6 or 8 ft (1.83 or 2.44 m) tri-entry
- Steel 4 ft (1.22 m)
- Steel 5 ft (1.52 m)

JIB OPTIONS

- Non-jib
- 5 ft (1.52 m) jib boom

POWER OPTIONS

- Deutz turbo diesel 78 hp (58.1 kW)
- Perkins diesel 63 hp (50 kW)
- Continental Gas/LPG 74 hp (56 kW)

DRIVE OPTIONS

- 2WD
- 4WD

AXLE

- Active oscillation

TIRE OPTIONS

- Rough terrain air-filled (standard)
- Rough terrain foam-filled
- Rough terrain non-marking air or foam-filled
- High flotation air-filled
- Sealant treated air-filled

STANDARD FEATURES

MEASUREMENTS

S™-80

- 86 ft (26.38 m) working height
- 72 ft 5 in (22.07 m) horizontal reach
- 600 lb (272 kg) lift capacity with 6 ft (1.83 m) platform
- 500 lb (227 kg) lift capacity with 8 ft (2.44 m) platform

S™-85

- 91 ft (27.90 m) working height
- 77 ft 5 in (23.60 m) horizontal reach
- 500 lb (227 kg) lift capacity with 6 ft (1.83 m) platform
- 500 lb (227 kg) lift capacity with 8 ft (2.44 m) platform

PRODUCTIVITY

- Self-leveling platform
- Hydraulic platform rotation
- Fully proportional Hall effect joystick controls
- Drive enable
- AC power cord to platform
- Horn
- Hour meter
- Tilt alarm
- 360° continuous turntable rotation
- Locking low profile turntable covers
- Positive traction drive
- Two speed wheel motors

POWER

- All engines are emissions compliant
- 12V DC auxiliary power
- Anti-restart engine protection
- Auto engine fault shutdown
- Catalytic converter muffler (Continental)
- Engine block heater (Continental)



OPTIONS & ACCESSORIES

PRODUCTIVITY

- 750 lb capacity, S-80 only
- Platform swing gate
- Half mesh platform inserts with swing gate
- Platform top auxiliary rail
- Arc Pro 275™ Heavy-Duty Welder package
- Welder Ready package
- Weld leads to platform
- Air line to platform
- Hydraulic oil cooler
- Arctic hydraulic oil
- Arctic hose package
- Basic hostile environment kit
- Deluxe hostile environment kit
- Standard aircraft protection package
- Deluxe aircraft protection package (6 ft platform only)
- Thumb rocker steer
- Tool tray
- Fluorescent tube caddy
- Pipe cradle (pair)
- Alarm package
- Panel cradle package*
- Platform work lights
- Front driving lights
- Lockable platform control box covers
- Second battery
- Tow package

POWER

- Engine gauge package
- AC Generator Packages (3000 or 3500 watts)
- Cold Start Packages
- Diesel scrubber/spark arrestor muffler
- Diesel spark arrestor muffler
- Retained key selector switch
- LPG tank only, steel, 33.5 lb (15.19 kg) capacity
- Additional LPG tank with carrier

* Available on select models

Genie United States

18340 NE 76th Street
P.O. Box 97030
Redmond, Washington 98073-9730

Telephone **(425) 881-1800**
Toll Free in USA/Canada **800-536-1800**
Fax (425) 883-3475

Genie Europe

The Maltings
Wharf Road
Grantham NG31 6BH
U.K.

Telephone **+44 (0)1476 584333**
Fax +44 (0)1476 584334

Email: infoeurope@genieind.com

Distributed By:

Effective Date: July, 2007. Product specifications and prices are subject to change without notice or obligation. The photographs and/or drawings in this document are for illustrative purposes only. Refer to the appropriate Operator's Manual for instructions on the proper use of this equipment. Failure to follow the appropriate Operator's Manual when using our equipment or to otherwise act irresponsibly may result in serious injury or death. The only warranty applicable to our equipment is the standard written warranty applicable to the particular product and sale and we make no other warranty, express or implied. Products and services listed may be trademarks, service marks or trade-names of Terex Corporation, Genie Industries, Inc. and/or their subsidiaries in the U.S.A. and many other countries and all rights are reserved. Terex™ is a Registered Trademark of Terex Corporation in the U.S.A. and many other countries. Genie® is a Registered Trademark of Genie Industries, Inc. in the U.S.A. and many other countries. Genie is a Terex Company. Copyright © 2007 Terex Corporation.

S80 3.5K 0707J. Part No. 109369

www.genieindustries.com