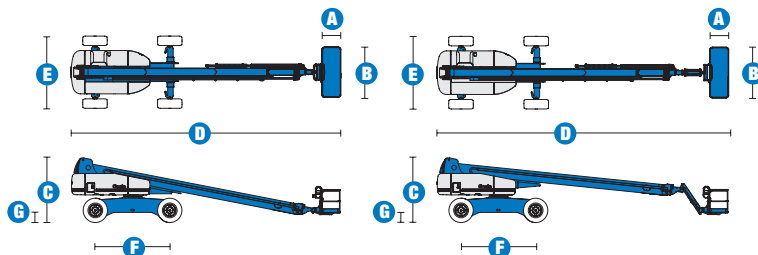


Specifications



| MODELS | S™-100 | | S™-105 | |
|---------------------------------------|-------------|---------|-------------|---------|
| MEASUREMENTS | US | Metric | US | Metric |
| Working height maximum* | 106 ft | 32.48 m | 111 ft | 34.00 m |
| Platform height maximum | 100 ft | 30.48 m | 105 ft | 32.00 m |
| Horizontal reach maximum | 75 ft | 22.86 m | 80 ft | 24.38 m |
| Below ground reach | 6 ft 6 in | 1.98 m | 10 ft | 3.05 m |
| A Platform length - 8 ft model | 3 ft | .91 m | 3 ft | .91 m |
| Platform length - 6 ft model | 2 ft 6 in | .76 m | 2 ft 6 in | .76 m |
| B Platform width - 8 ft model | 8 ft | 2.44 m | 8 ft | 2.44 m |
| Platform width - 6 ft model | 6 ft | 1.83 m | 6 ft | 1.83 m |
| C Height - stowed | 10 ft 1 in | 3.07 m | 10 ft 1 in | 3.07 m |
| D Length - stowed | 42 ft 8 in | 13.00 m | 46 ft | 14.02 m |
| Length - transport (jib tucked under) | — | — | 39 ft 11 in | 12.17 m |
| E Width - axle retracted | 8 ft 2 in | 2.49 m | 8 ft 2 in | 2.49 m |
| Width - axle extended | 11 ft | 3.35 m | 11 ft | 3.35 m |
| F Wheelbase | 12 ft | 3.66 m | 12 ft | 3.66 m |
| G Ground clearance - center | 1 ft 5.5 in | .44 m | 1 ft 5.5 in | .44 m |

PRODUCTIVITY

| | | | | |
|--|----------------------|----------|----------------------|----------|
| Lift capacity | 750 lbs | 340 kg | 500 lbs | 227 kg |
| Platform rotation | 160° | | 160° | |
| Vertical jib rotation | — | | 135° | |
| Turntable rotation | 360° continuous | | 360° continuous | |
| Turntable tailswing - axle retracted | 5 ft 6 in | 1.68 m | 5 ft 6 in | 1.68 m |
| Turntable tailswing - axle extended | 4 ft | 1.22 m | 4 ft | 1.22 m |
| Drive speed - stowed | 3.0 mph | 4.8 km/h | 3.0 mph | 4.8 km/h |
| Drive speed - raised or extended | 0.68 mph | 1.1 km/h | 0.68 mph | 1.1 km/h |
| Gradeability - stowed** | 40% | | 40% | |
| Turning radius - axles retracted: inside | 13 ft 7 in | 4.14 m | 13 ft 7 in | 4.14 m |
| outside | 21 ft 7 in | 6.58 m | 21 ft 7 in | 6.58 m |
| Turning radius - axles extended: inside | 9 ft | 2.74 m | 9 ft | 2.74 m |
| outside | 19 ft 10 in | 6.05 m | 19 ft 10 in | 6.05 m |
| Controls | 12 V DC proportional | | 12 V DC proportional | |
| Tires - RT lug | 385/65D 22.5 | | 385/65D 22.5 | |

POWER

| | | | | |
|-------------------------|---|-------|---------|-------|
| Power Source | Deutz BF4L 2011 4 cylinder diesel 78 hp (58 kW) Perkins 1104C-44 4 cylinder diesel 83 hp (62 kW) Cummins B4.5 C80 4 cylinder diesel 80 hp (60 kW) | | | |
| Auxiliary Power Unit | 12 V DC | | 12 V DC | |
| Hydraulic Tank Capacity | 55 gal | 208 L | 55 gal | 208 L |
| Fuel Tank Capacity | 40 gal | 151 L | 40 gal | 151 L |

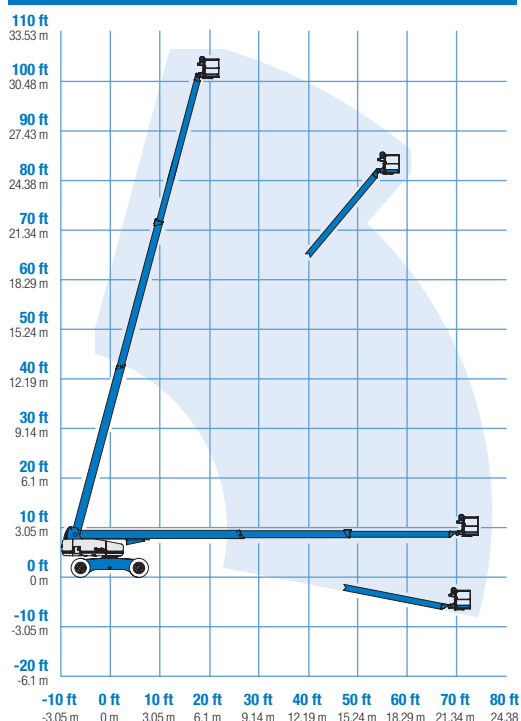
WEIGHT***

| | | | | |
|--|------------|-----------|------------|-----------|
| | 39,700 lbs | 18,008 kg | 40,000 lbs | 18,144 kg |
|--|------------|-----------|------------|-----------|

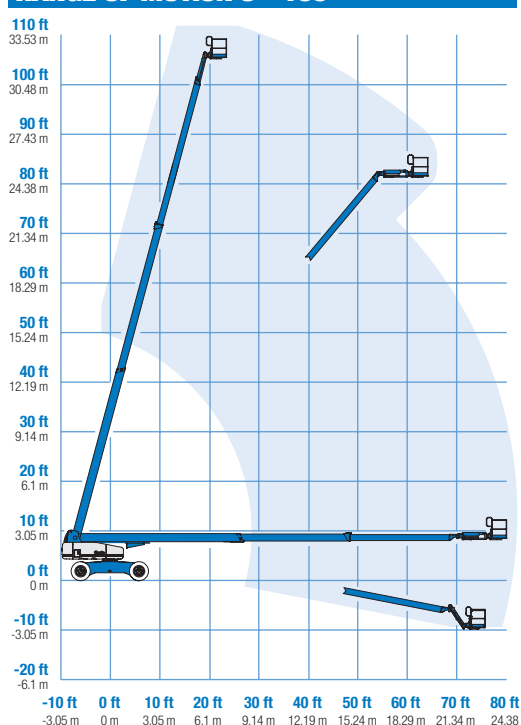
STANDARDS COMPLIANCE

ANSI A92.5, CSA B354.4, CE Compliance, AS 1418.10

RANGE OF MOTION S™-100



RANGE OF MOTION S™-105



* The metric equivalent of working height adds 2 m to platform height. U.S. adds 6 ft to platform height.

** Gradeability applies to driving on slopes. See operator's manual for details regarding slope ratings.

*** Weight will vary depending on options and/or country standards.

Features

EASILY CONFIGURED TO MEET YOUR NEEDS

PLATFORM OPTIONS

- Steel 8 ft (2.44 m) (standard)
- Steel 6 ft (1.83 m)
- Steel 6 or 8 ft (1.83 or 2.44 m) tri-entry
- Steel 4 ft (1.22 m)
- Steel 5 ft (1.52 m)

JIB OPTIONS

- Non-jib
- 5 ft (1.52 m) jib boom

POWER OPTIONS

- Deutz diesel 78 hp (58 kW)
- Perkins diesel 83 hp (62 kW)
- Cummins diesel 80 hp (60 kW)

DRIVE/STEER OPTIONS

- 4WD (standard)
- 4WS (standard)

AXLE

- Extendable axles (standard)

TIRE

- Rough terrain foam-filled (standard)

STANDARD FEATURES

MEASUREMENTS

S™-100

- 106 ft (32.48 m) working height
- 75 ft (22.86 m) horizontal reach
- 750 lb (340 kg) lift capacity

S™-105

- 111 ft (34.00 m) working height
- 80 ft (24.38 m) horizontal reach
- 500 lb (227 kg) lift capacity

PRODUCTIVITY

- Self-leveling platform
- Hydraulic platform rotation
- Fully proportional Hall effect joystick controls
- Hydraulic oil cooler
- Drive enable
- AC power cord to platform
- Horn
- Hour meter
- Tilt alarm
- Alarm package
- 360° continuous turntable rotation
- Locking low profile turntable covers
- Positive traction drive
- Two speed wheel motors
- Configurable controls to limit lift height to 80 ft
- Ground control box cover

POWER

- All engines are emissions compliant
- 12 V DC auxiliary power
- Anti-restart engine protection
- Auto engine fault shutdown



OPTIONS & ACCESSORIES

PRODUCTIVITY

- Platform swing gate
- Half mesh platform inserts with swing gate
- Platform top auxiliary rail
- Arc Pro 275™ Heavy-Duty Welder package
- Welder Ready package
- Weld leads to platform
- Air line to platform
- Arctic hydraulic oil
- Arctic hoses package
- Basic hostile environment kit
- Deluxe hostile environment kit
- Deluxe aircraft protection package (6 ft platform only)
- Thumb rocker steer
- Tool tray
- Fluorescent tube caddy
- Pipe cradle (pair)
- Panel cradle package*
- Platform work lights
- Front driving lights
- Lockable platform control box covers

* Available on select models

POWER

- Engine gauge package
- AC Generator Packages (3000 or 3500 watts)
- Cold Start Packages
- Diesel scrubber/spark arrestor muffler
- Diesel spark arrestor muffler (not available on Cummins engine)
- Retained key selector switch

Genie United States

18340 NE 76th Street
P.O. Box 97030
Redmond, Washington 98073-9730

Telephone **(425) 881-1800**
Toll Free in USA/Canada **800-536-1800**
Fax (425) 883-3475

Genie Europe

The Maltings
Wharf Road
Grantham NG31 6BH
U.K.

Telephone **+44 (0)1476 584333**
Fax +44 (0)1476 584334

Email: infoeurope@genieind.com

Distributed By:

Effective Date: July, 2007. Product specifications and prices are subject to change without notice or obligation. The photographs and/or drawings in this document are for illustrative purposes only. Refer to the appropriate Operator's Manual for instructions on the proper use of this equipment. Failure to follow the appropriate Operator's Manual when using our equipment or to otherwise act irresponsibly may result in serious injury or death. The only warranty applicable to our equipment is the standard written warranty applicable to the particular product and sale and we make no other warranty, express or implied. Products and services listed may be trademarks, service marks or trade-names of Terex Corporation, Genie Industries, Inc. and/or their subsidiaries in the U.S.A. and many other countries and all rights are reserved. Terex™ is a Registered Trademark of Terex Corporation in the U.S.A. and many other countries. Genie® is a Registered Trademark of Genie Industries, Inc. in the U.S.A. and many other countries. Genie is a Terex Company. Copyright © 2007 Terex Corporation.