

SPECIFICATION

B-LIFT 510 HR

TECHNICAL DATA

- Telescopic boom (4 elements) (main boom + 3 extensions)
- Extra long main jib with double extension and 180° swivelling angle
- Secondary jib with 180° swivelling angle
- Hydraulic and electric supply fitted on cable carrier chain inside main boom and jib
- Automatic management system of secondary jib movements
- 570° slewing turret on bearing turntable and gearmotor with negative hydraulic brake
- Ground control station with remote umbilical cord controls
- Turret and basket control stations with multifunction integrated colour display
- Proportional electrohydraulic controls with simultaneous manoeuvres (ergonomic joysticks)
- Vehicle cab anticollision devices
- Automatic basket and boom centring device
- Automatic steady tangential speed management system
- Automatic return to transport position
- Intercom communication device integrated on control station
- Engine start/stop control from basket and ground
- Hydraulically extendable aluminium basket
- 90° Right + 90° Left hydraulic rotating basket
- Electronic basket levelling
- Automatic limiting device controlling outreach according to basket weight and stabiliser configuration
- Auxiliary stand-by electro-hydraulic power pack, supplied by truck battery
- Water or compressed air socket in the basket
- 230 V AC CE Electric socket in the basket

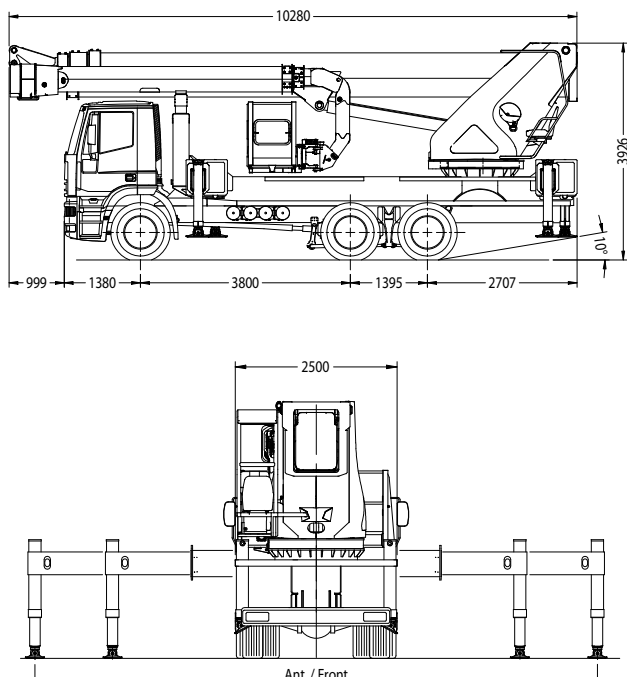
PERFORMANCE

Working height	50,7 m
Platform height	48,7 m
Working outreach	35/31,3/28,1 m
Capacity	120/280/450 kg
Basket dim.	2400/3600x900x1100 mm
GVW minimum	26 t*

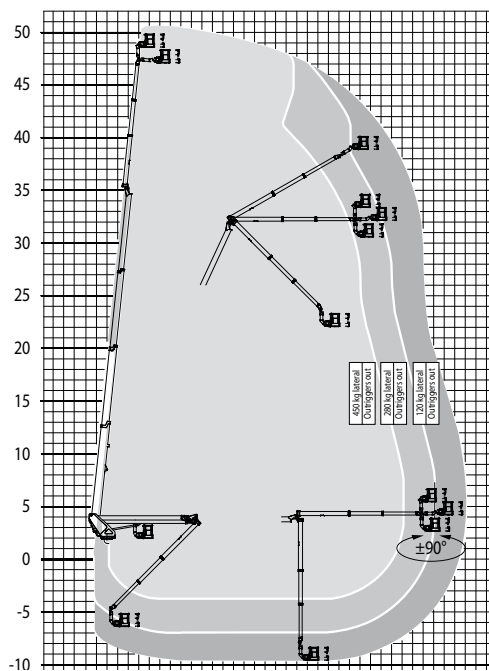
* It's available version on 32t



DIMENSIONS - OUTRIGGER FOOTPRINT



WORKING ENVELOPE



KEY POINTS

Aluminium basket dim. 2400x900x1100
(hydraulically extensible to 3600mm)
capacity 120/280/450kg

Main boom with simultaneous telescopic extension
without any side swing



Rotating basket $\pm 90^\circ$

Secondary jib with 180° articulated joint
with independent control system

Variable jacking
system

CTE S.p.A. | www.ctelift.com

Sales Office Dolo (Ve) - dolo@ctelift.com
 ph. +39 041 51.00.130 - fax +39 041 41.38.44
 Headquarter Rovereto (Tn) - info@ctelift.com
 ph. +39 0464 48.50.50 - fax +39 0464 48.50.99
 Milano Branch S. Giuliano Milanese (Mi) - milano@ctelift.com
 ph. +39 02 98.81.100 - fax +39 02 98.28.20.96
 Bertinoro Branch & Factory (FC) - bertinoro@ctelift.com
 ph. +39 0543 44.88.30 - fax +39 0543 44.83.43



Product specifications are subject to change without notice or obligation. Technical features and drawings in this brochure are for illustrative purposes only. BS101HR - ed. 10/09



Branches: Rovereto, Dolo and S. Giuliano Milanese