

# SPECIFICATION

## **B-LIFT 620 HR**

### **TECHNICAL DATA**

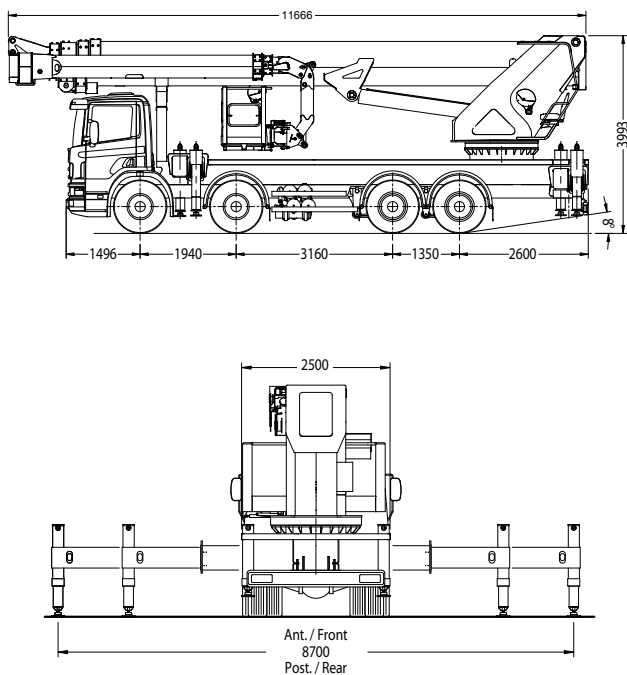
- Telescopic boom (5 elements) (main boom + 4 extensions)
- Extra long main jib with double extension and 180° swivelling angle
- Secondary jib with 180° swivelling angle
- Hydraulic and electric supply fitted on cable carrier chain inside main boom and jib
- Automatic management system of secondary jib movements
- 570° slewing turret on bearing turntable and gearmotor with negative hydraulic brake
- Ground control station with remote umbilical cord controls
- Turret and basket control stations with multifunction integrated colour display
- Proportional electrohydraulic controls with simultaneous manoeuvres (ergonomic joysticks)
- Vehicle cab anticollision devices
- Automatic basket and boom centring device
- Automatic steady tangential speed management system
- Automatic return to transport position
- Intercom communication device integrated on control station
- Engine start/stop control from basket and ground
- Hydraulically extendable aluminium basket
- 90° Right + 90° Left hydraulic rotating basket
- Electronic basket levelling
- Automatic limiting device controlling outreach according to basket weight and stabiliser configuration
- Auxiliary stand-by electro-hydraulic power pack, supplied by truck battery
- Water or compressed air socket in the basket
- 230 V AC CE Electric socket in the basket

### **PERFORMANCE**

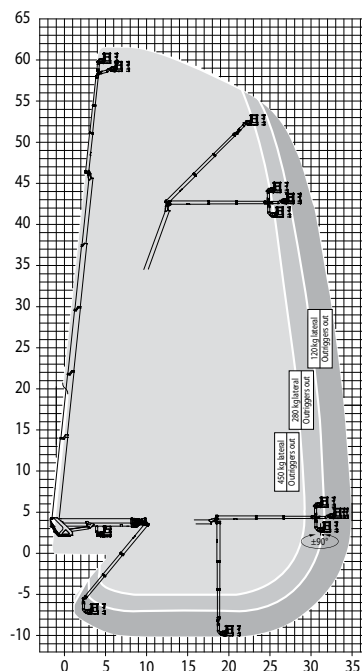
Working height	61,6 m
Platform height	59,6 m
Working outreach	35/31,6/29,2 m
Capacity	120/280/450 kg
Basket dim.	2400/3600x900x1100 mm
GVW minimum	32 t



## DIMENSIONS - OUTRIGGER FOOTPRINT



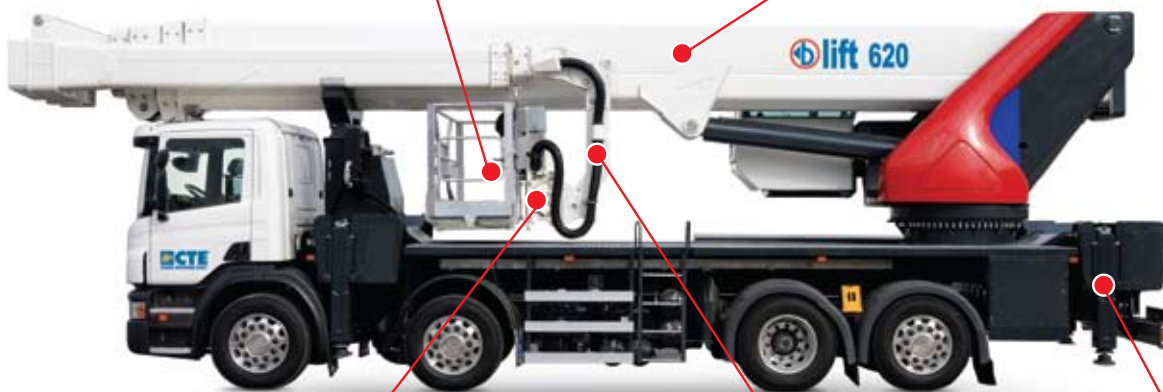
## WORKING ENVELOPE



## KEY POINTS

Aluminium basket dim. 2400x900x1100  
(hydraulically extensible to 3600mm)  
capacity 120/280/450kg

Main boom with simultaneous telescopic extension  
without any side swing



Rotating basket  $\pm 90^\circ$

Secondary jib with 180° articulated joint  
with independent control system

Variable jacking  
system

CTE S.p.A. | [www.ctelift.com](http://www.ctelift.com)

Sales Office Dolo (Ve) - [dolo@ctelift.com](mailto:dolo@ctelift.com)  
 ph. +39 041 51.00.130 - fax +39 041 41.38.44  
 Headquarter Rovereto (Tn) - [info@ctelift.com](mailto:info@ctelift.com)  
 ph. +39 0464 48.50.50 - fax +39 0464 48.50.99  
 Milano Branch S. Giuliano Milanese (Mi) - [milano@ctelift.com](mailto:milano@ctelift.com)  
 ph. +39 02 98.81.100 - fax +39 02 98.28.20.96  
 Bertinoro Branch & Factory (FC) - [bertinoro@ctelift.com](mailto:bertinoro@ctelift.com)  
 ph. +39 0543 44.88.30 - fax +39 0543 44.83.43



Product specifications are subject to change without notice or obligation. Technical features and drawings in this brochure are for illustrative purposes only. BS101HR - ed. 10/09

ADVERTENDO.COM™ We know how.  
  
  


Branches: Rovereto, Dolo and S. Giuliano Milanese