

J Series 2900-4400lb electric Three-wheel Forklift Specification

NO.		Manufacture		CPDS13JC1 CPDS13JD1		CPDS15JC1 CPDS15JD1		CPDS16JC1 CPDS16JD1		CPDS18JC1 CPDS18JD1		CPDS20JC1 CPDS20JD1		
Specification	1	Model												
	2	Rated capacity	lb	2900	3300	3500	4000	4400						
	3	Load center	inch	20	20	20	20	20						
	4	Lift height	inch	118	118	118	118	118						
	5	Free lift height	inch	5.9	5.9	5.9	5.9	5.9						
	6	Fork size	s×e×l	inch	1.57×3.94×36.2	1.57×3.94×36.2	1.57×3.94×36.2	1.57×3.94×36.2	1.57×3.94×42.1					
	7	Tilting angle	F/R	Deg	6.5/6.5	6.5/6.5	6.5/6.5	6.5/6.5	6.5/6.5					
Dimensions	8	Overall dimensions	Length to face of fork	inch	71	71	75	75	79					
	9		width	inch	42	42	42	42	42					
	10		Height when mast lowered	inch	79	79	79	79	81					
	11		Height when mast lifting	inch	155	155	155	155	158					
	12		Height to safeguard	inch	77	77	77	77	77					
	13	Height seat	inch	37	37	37	37	37						
	14	Turning radius	Min.	inch	57	57	61	61	65					
	15	Overhang		inch	14	14	14	14	14					
	16/17	Thread(Front/Rear)		inch	35.5/6.89	35.5/6.89	35.5/6.89	35.5/6.89	36/6.89					
	18	Ground clearance	Min.	inch	3.5	3.5	3.5	3.5	3.5					
	19	Wheelbase		inch	49.2	49.2	53.5	53.5	57.7					
	20	Fork spread	Min./ Max.	inch	7.87/39.4	7.87/39.4	7.87/39.4	7.87/39.4	7.87/39.4					
	21	Working aisle width	1000×1200 crossways	inch	124	124	129	129	133					
	22	with pallet (Ast*)	800×1200 lengthways	inch	128	128	133	133	137					
	Performance	23	Speed	Travel (Laden)	mile/h	8.7	8.7	8.7	8.7	8.7	8.1	8.1		
24		Travel (Unladen)		mile/h	8.7	8.7	8.7	8.7	8.7	8.1	8.1			
25		Lifting (Laden)		inch/s	11.8	11.4	11	10.6	9.8					
26			Lifting (Unladen)	inch/s	17.7	17.3	16.9	15.7						
27		Gradeability	Laden	%	20	20	20	20	18	18	15	15		
28			Unladen	%	20	20	20	20	20	20	18	18		
29	Service weight	include battery box	lb	6100	6500	6600	6800	7400						
30	Tyre	Front×2		18×7-8	18×7-8	18×7-8	18×7-8	200/50-10						
31		Rear×2		15×4.5-8	15×4.5-8	15×4.5-8	15×4.5-8	15×4.5-8						
Driven	32	Motor	Driven motor ×2	hp	6.2×2	6.2×2	6.2×2	6.2×2	6.2×2	6.2×2	6.2×2	6.2×2		
	33		Pump motor	hp	11.5	11.5	11.5	11.5	11.5					
	34	Battery	Standard	V/AH	48/400	48/400	48/500	48/500	48/600					
	35	Controller	Type		MOSFET	MOSFET	MOSFET	MOSFET	MOSFET					
	36		Drive system		AC	AC	AC	AC	AC	AC	AC	AC		
	37		Manufacturer		Curtis	Danaher	Curits	Danaher	Curtis	Danaher	Curtis	Danaher		
38	Operating pressure for attachment		Mpa	14.5	14.5	14.5	14.5	14.5						

1.Special lifting height available. 2.Attachment available.

3.The specification in the table are for standard model sonlfo r further information please contact us.

4.Specification are subject to change without notice.

5.Note:J D1 series means DanaheAC drive system.

6.J C1 means CurtisAC controller(tractionAC).

2900/3300/3500/4000/4400lb J series mast

Type	Model	Mast fork height	Lowered	Overall height		Free lift		Tilt range		Capacity				
				Extended		Extended		FWD	RWD	Load capacity at 20 inch				
				With backrest	Without backrest	With backrest	Without backrest			2900lb	3300lb	3500lb	4000lb	4400lb
Wide view mast	S16MX	98	69	136	121	5.7	5.7	6.5	6.5	2900	3300	3500	4000	4400
		106	73	144	129	5.7	5.7	6.5	6.5	2900	3300	3500	4000	4400
		118	79	155	140	5.7	5.7	6.5	6.5	2900	3300	3500	4000	4400
		130	84	167	152	5.7	5.7	6.5	6.5	2900	3300	3500	4000	4400
		138	88	175	160	5.7	5.7	6.5	6.5	2900	3300	3500	4000	4400
		142	90	179	164	5.7	5.7	6.5	6.5	2900	3300	3500	4000	4400
		157	100	195	180	5.7	5.7	3.5	5	2900	3300	3500	4000	4400
		169	107	206	192	5.7	5.7	3.5	5	2600	3100	3500	3700	4200
		177	111	214	199	5.7	5.7	3.5	5	2400	2900	3100	3500	4000
		Wide view full free 3-stage mast	S16NX	169	79	206	193	43	56	3.5	5	2600	3100	3300
177	82			214	201	46	58	3.5	5	2400	2900	3100	3500	4000
189	86			226	213	50	62	3.5	5	2200	2600	2900	3300	3400
197	88			234	221	53	65	3.5	5	2100	2500	2800	3200	3300
217	95			254	240	59	71	3.5	5	1900	2300	2500	2600	2900
236	103			273	261	66	79	3.5	5	1700	2100	2300	2400	2600

Note: With side-shift, load capacity subtract 440 lb.

Customization is available

Products and specifications are

subject to be changed without notice

Standard Feature

- AC drive system
- Front capacity storage battery
- Emergency disconnect switch
- Rubber floor mat
- Grammer high elastic seat
- 2 Spools control valve
- 3 meters/118 inch 2-stage mast
- Adjustable steering controlled
- Rearview mirror
- Drive, lift, steering controlled
- Rear combined lamp
- Beeper
- Toolbox and file folder
- Hour meter, self-diagnose indicator

Optional Feature

- 3 or 4 spools control valve
- 4.3-6 meters / 169-236 inch 3-stage mast
- With attachment
- Option fork
- High capacity battery
- Speed carriage



CE
ISO9000

Jseries

1.3/1.5/1.6/1.8/2.0T
2900/3300/3500/4000/4400lb
Electric Three-wheel Forklift





EP Electric Forklift Truck-J series

INTRODUCTION

The distinctive features of the new J series electric three-wheel forklift are as follows:

- Versatility of use due to compact design and minimal operating space requirements. Compact dimensions combined with superb maneuverability.
- High stability, both when stationary and cornering, due to long wheelbase, low centre of gravity and wide tyres.
- Economy of operation, resulting from minimized maintenance costs, e.g. Low-wear brakes.



An integral full-vision side-shift.



The wide mast, low scuttle and high seating position gives the operator an excellent view, reduces loading damage and accidents.



The incorporation of ZF® developed components, including finely engineered helical gears, assured low noise, high quality and a longer service life.

PANEL

simple, comprehensive



CHASSIS & HYDRAULICS

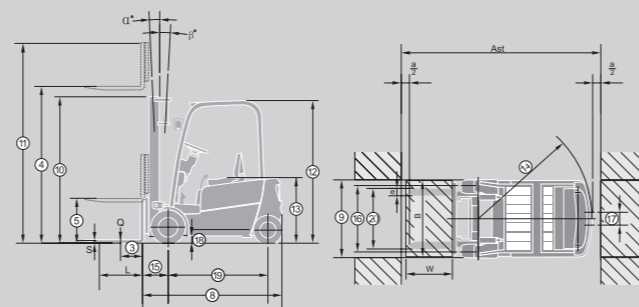
A fully enclosed chassis frame house the drive motors. The hydraulic and drive components are protected against dirt and water.

Brakes

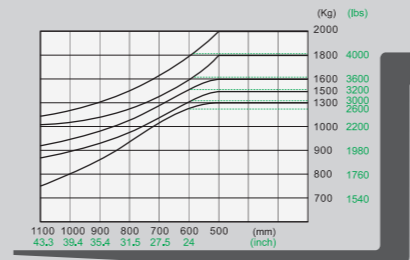
The J series three-wheel truck has three independent braking systems:

- Regenerative braking system
- Hydraulic wet disc brake system
- Toggle-type parking brake

DIMENSIONS



LOAD CHART



Comfortable seat can be upgraded to a luxury semisuspension version.



Full accessible 48 volt batteries with 400-600 Ah capacity are controlled by Danaher or Curtis AC control systems.



The state-of-the-art controller can be easily accessed at waist height, helping to reduce servicing time. AC technology to heavy-duty applications. The use of current is optimised and AC motors are brushless, which minimises servicing. Motors are very well protected against the water and dust. Roll-back is almost eliminated and higher travel speeds are attainable. More than thirty performance parameters can be adjusted to suit all type of load, working area and skill of the driver.



The adjustable steering Column ensure a comfortable working position.

J Series 1.3-2.0t electric Three-wheel Forklift Specification

NO.		Manufacture		EP						
1		Model	CPDS13JC1 CPDS13JD1	CPDS15JC1 CPDS15JD1	CPDS16JC1 CPDS16JD1	CPDS18JC1 CPDS18JD1	CPDS20JC1 CPDS20JD1	CPDS20JD1		
Specification	2	Rated capacity	kg	1300	1500	1600	1800	2000		
	3	Load center	mm	500	500	500	500	500		
	4	Lift height	mm	3000	3000	3000	3000	3000		
	5	Free lift height	mm	150	150	150	150	150		
	6	Fork size	s×e×l	mm	40×100×920	40×100×920	40×100×920	40×100×920	40×100×1070	
	7	Tilting angle	F/R	Deg	6.5/6.5	6.5/6.5	6.5/6.5	6.5/6.5	6.5/6.5	
	8	Length to face of fork	mm	1792	1792	1900	1900	2012		
Dimensions	9	width	mm	1060	1060	1060	1060	1060		
	10	Height when mast lowered	mm	1995	1995	1995	1995	2055		
	11	Height when mast lifting	mm	3945	3945	3945	3945	4005		
	12	Height to safeguard	mm	1960	1960	1960	1960	1960		
	13	Height seat	mm	930	930	930	930	930		
	14	Turning radius	Min.	mm	1440	1440	1550	1550	1658	
	15	Overhang	mm	355	355	355	355	355		
	16/17	Thread(Front/Rear)	mm	902/175	902/175	902/175	902/175	915/175		
	18	Ground clearance	Min.	mm	90	90	90	90		
	19	Wheelbase	mm	1250	1250	1358	1358	1465		
Performance	20	Fork spread	Min./ Max.	mm	200/1000	200/1000	200/1000	200/1000		
	21	Working aisle width with pallet (Ast*)	1000×1200 crossways	mm	3161	3161	3271	3271	3380	
	22	800×1200 lengthways	mm	3260	3260	3370	3370	3480		
	23	Speed	Travel (Laden)	km/h	14	14	14	14	13	13
			Travel (Unladen)	km/h	14	14	14	14	13	13
			Lifting (Laden)	mm/s	300	290	280	270	250	
			Lifting (Unladen)	mm/s	450	440	440	430	400	
	27	Gradeability	Laden	%	20	20	20	18	15	
			Unladen	%	20	20	20	20	18	
	28	Service weight	include battery box	kg	2760	2950	3020	3080	3370	
30	Tyre	Front×2		18×7-8	18×7-8	18×7-8	18×7-8	200/50-10		
31	Rear×2			15×4.5-8	15×4.5-8	15×4.5-8	15×4.5-8	15×4.5-8		
Driven	32	Motor	Driven motor ×2	kw	4.6×2	4.6×2	4.6×2	4.6×2	4.6×2	
	33	Pump motor		kw	8.6	8.6	8.6	8.6		
	34	Battery	Standard	V/AH	48/400	48/400	48/500	48/500	48/600	
	35	Type			MOSFET	MOSFET	MOSFET	MOSFET		
	36	Controller	Drive system		AC	AC	AC	AC	AC	
	37	Manufacturer			Curtis	Danaher	Curtis	Danaher	Curtis	
	38	Operating pressure for attachment	Mpa		14.5	14.5	14.5	14.5	14.5	

1.Special lifting height available. 2.Attachment available.
 3.The specification in the table are for standard model only. For further information please contact us.
 4.Specification are subject to change without notice. 5.Note:J D1 series means Danaher AC drive system. 6.JC1 means Curtis AC controller(traction AC).

1.3/1.5/1.6/1.8/2.0t J series mast

Type	Model	Mast fork height	Lowered	Overall height		Free lift		Tilt range		Capacity				
				Extended		Extended		FWD	RWD	Load capacity at 500 mm				
				With backrest	Without backrest	With backrest	Without backrest			1.3T	1.5T	1.6T	1.8T	2.0T
		mm	mm	mm	mm	mm	mm	Deg	Deg	kg	kg	kg	kg	kg
Wide view mast	S16MX	2500	1745	3445	3065	145	145	6.5	6.5	1300	1500	1600	1800	2000
		2700	1845	3645	3265	145	145	6.5	6.5	1300	1500	1600	1800	2000
		3000	1995	3945	3565	145	145	6.5	6.5	1300	1500	1600	1800	2000
		3300	2145	4245	3865	145	145	6.5	6.5	1300	1500	1600	1800	2000
		3500	2245	4445	4065	145	145	6.5	6.5	1300	1500	1600	1800	2000
		3600	2295	4545	4165	145	145	6.5	6.5	1300	1500	1600	1800	2000
		4000	2545	4945	4565	145	145	3.5	5	1300	1500	1600	1800	2000
		4300	2710	5245	4865	145	145	3.5	5	1200	1400	1500	1700	1900
Wide view full free 3-stage mast	S16NX	4500	2820	5445	5065	145	145	3.5	5	1100	1300	1400	1600	1800
		4300	2010	5245	4905	1100	1415	3.5	5	1200	1400	1500	1700	1900
		4500	2075	5445	5105	1170	1480	3.5	5	1100	1300	1400	1600	1800
		4800	2175	5745	5405	1270	1580	3.5	5	1000	1200	1300	1500	1550
		5000	2240	5945	5605	1340	1645	3.5	5	950	1150	1250	1450	1500
		5500	2410	6445	6105	1500	1815	3.5	5	850	1050	1150	1200	1300
6000	2625	6945	6625	1670	2010	3.5	5	750	950	1050	1100	1200		

Note: With side-shift, load capacity subtract 200kg.