

Flanged professional extension ladders in ribbed aluminium. They conform to European standard EN131 and are tested by the Politecnico di Milano (Applied-Science Faculty in Milan). The model is excellent for both its structure and features.



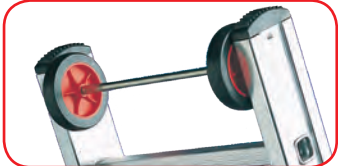
EURO IS THE MIDDLE RANGE WITH VERY GOOD DIMENSIONS AND ACCESSORIES



Aluminium opening hinges



Base stabilizer E2/E3



Non-slip rubber wheels (standard)



Non-slip rubber wheels just for E3-E3Fx12/14/16



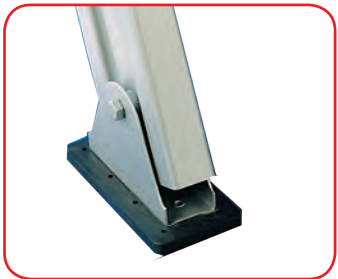
Optional: SALLAR31
Folded length mm 825
Open length mm 1300

STANDARD PARTS

- Sliding wheels (E2 - E3)
- Base stabiliser (E2 - E3)
- Adjustable wrench for stabiliser fastening
- Instructions for assembly and use
- Nylon reinforcement inside stabiliser seat
- Aluminium opening system
- Rungs section 27 x 27 mm - Rung distance 28 cm
- Straps preventing uncontrolled ladder opening
- Rubber feet
- Device to stop upward movement
- Extension blocking device to prevent ladder movement when the safety limit is reached
- Capacity 150 kg
- Thermo-shrinkable plastic package with showcard

Flanged, ribbed and ergonomic rungs.

Three-phase flanging (rungs are fixed with a "sandwich" system) for a long lasting: 1 and 2. Frame inner side swelling, frame outer side flanging and 3 swelling inside the frame. Safe and easy use is therefore ensured by a flat stable rung for the user granting greater ease and productivity. There is no cutting into the foot as in traditional square rungs which form a diamond shape causing uncomfortable use.



Optional adjustable feet

E1 ladders above m 3 can be used in compliance with the European Standard only with purchase and assembly of the stabilizer

EURO E1



Light and strong single section ladder. Section width 42,3 cm



n.	m	m	mm	Kg	Cod./mm
8	2,32	1,60	57x27	4,0	no
10	2,87	2,16	57x27	5,0	no
12	3,42	2,72	57x27	6,0	no
14	4,02	3,28	57x27	7,0	no
16	4,57	3,84	67x27	9,0	no
18	5,12	4,40	67x27	10,0	no
20	5,67	4,96	84x27	12,0	no
12A*	3,42	2,72	57x27	8,0	SALLARE01/897
14A*	4,02	3,28	57x27	9,0	SALLARE01/897
16A*	4,57	3,84	67x27	11,0	SALLARE01/897
18A*	5,12	4,40	67x27	12,0	SALLARE02/1017
20A*	5,67	4,96	84x27	14,0	SALLARE02/1017

*E1 models above m 3 are prepared for assembling the stabilizer. All models are designed for the assembling of the optional articulated feet.



For all ladders with optional stabilizer (E1, E2F, E3F):

Optional standard adjustable feet

55x120 mm

Optional large adjustable feet

59x178 mm

Optional stabilizer: mandatory according to the European Standard EN131/1/2015 for models over 3 m.

Optional handrails: E1 from 8 to 18 rungs (profile section mm 57 e 67)

m 0,6 (SCOR0601) - m 1,0 (SCOR1001)

m 1,5 (SCOR1501) - m 2,0 (SCOR2001)

Optional handrails: E1 20 rungs (profile section mm 84)

m 0,6 (SCOR0602) - m 1,0 (SCOR1002)

m 1,5 (SCOR1502) - m 2,0 (SCOR2002)



VIDEO E1 with stabilizer

