



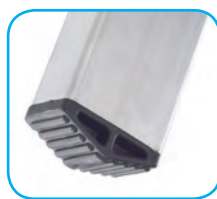
Extension ladders in ribbed aluminium suitable for DIY with standard structure and components.



Painted steel opening system



Base stabiliser



Non-skid rubber feet (U1)

STANDARD PARTS

- Base stabiliser (U2 and U3)
- Fixed straps preventing uncontrolled ladder opening (U2 and U3)
- Device to stop uncontrolled upward movement (U2 and U3)
- Non-skid rubber feet
- Extension blocking device to prevent ladder moving when the safety limit is reached (U2 and U3)
- Assembly and use instructions
- Flanged rungs 25 mm - Rung section 27 x 27 mm
- Distance between rungs 28 cm
- Painted steel opening system
- Capacity 150 kg



U1



U1 ladders above m 3 can be used in compliance with the European Standard only with purchase and assembly of the stabilizer

Optional stabilizer: according to the European Standard EN131/1/2015 for models over 3 m. U1 models over m.3 are designed for assembling the stabilizer by the customer.

Light and strong single section ladder.



n.	m	m	mm	Kg	Cod./mm
8	2,32	1,60	57x27	4,0	no
10	2,87	2,16	57x27	4,5	no
12	3,42	2,72	57x27	5,5	no
14	4,02	3,28	57x27	6,5	no
16	4,57	3,84	67x27	8,5	no
18	5,12	4,40	67x27	9,5	no
20	5,67	4,96	84x27	11,5	no
12A*	3,42	2,72	57x27	7,5	SALLARE01/897
14A*	4,02	3,28	57x27	8,5	SALLARE01/897
16A*	4,57	3,84	67x27	10,5	SALLARE01/897
18A*	5,12	4,40	67x27	11,5	SALLARE02/1017
20A*	5,67	4,96	84x27	13,5	SALLARE02/1017

Section width 36 cm

EN131 TESTED BY TÜV

Capacity 150 Kg

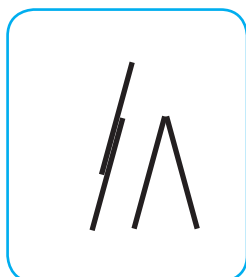
GUARANTEE 2 YEARS



U2



EN131 TESTED BY TÜV



Positions for use

Two-section push-up and stepladder.



n.	m	m	m	cm	mm	Kg
7	1,99	1,89	3,39	80	60x20 60x20	6,6
9	2,55	2,41	3,95	80	60x20 60x20	8,3

Base section width 45,5 cm
Final section width 34,5 cm

Capacity 150 Kg

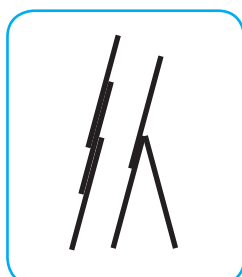
GUARANTEE 2 YEARS



U3

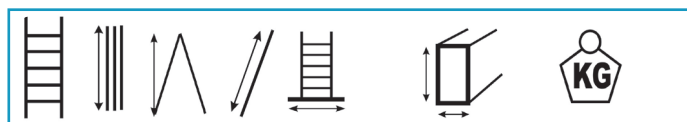


EN131 TESTED BY TÜV



Positions for use

Three-section push-up and stepladder.



n.	m	m	m	cm	mm	Kg
7	2,01	1,88	4,25	77	51x20 60x20 51x20	9,8
8	2,29	2,17	5,09	91	60x20 71x20 60x20	12,0
9	2,57	2,42	5,65	91	60x20 71x20 60x20	13,6
10	2,85	2,71	6,49	105	60x20 71x20 60x20	15,3
12	3,41	3,25	7,89	114	71x20 83x20 71x20	20,5

When used as a stepladder, the third section serves only as a guard-rail.

Base section width 46 cm
Intermediate section width 40,6 cm
Final section width 34,5 cm

Capacity 150 Kg

GUARANTEE 2 YEARS

