

# 1850 E



[www.ommelift.dk](http://www.ommelift.dk)

## TRAILER MOUNTED BOOM PLATFORM

OMME LIFT A/S – Lægårdsvej 4 – DK 7260 Sdr. Omme  
Phone: + 45 753 413 00 – Fax: + 45 753 415 92  
E-mail: [omme@ommelift.dk](mailto:omme@ommelift.dk) – Web: [www.ommelift.dk](http://www.ommelift.dk)

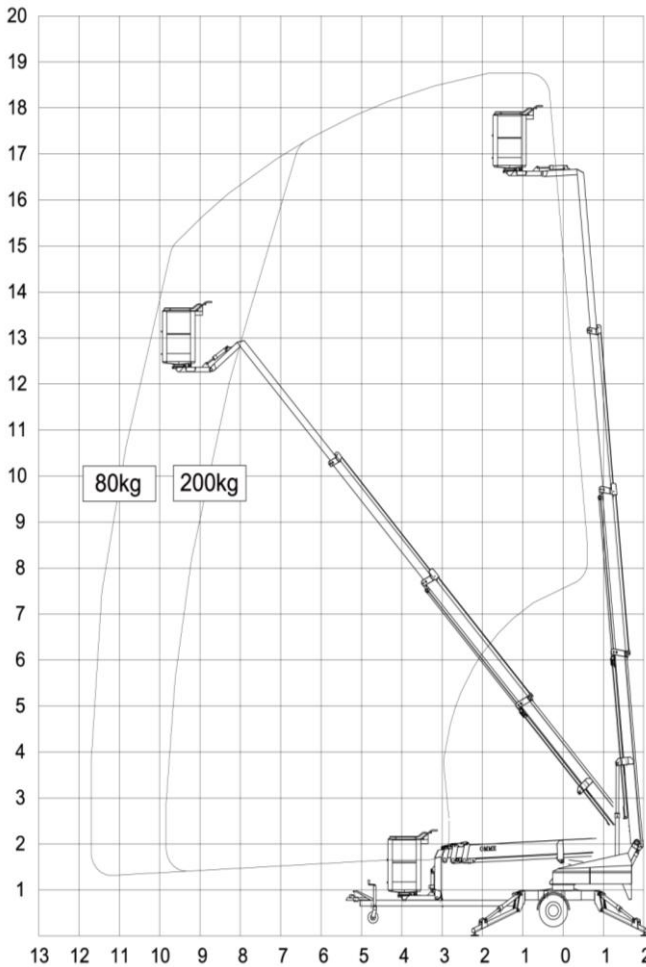
# OMMELIFT



Quality since 1906

# 1850 E

## Mounted on trailer



| Technical data:       | 1850 E        | 1850 EB      | 1850 EBD       |
|-----------------------|---------------|--------------|----------------|
| Max. working height   | 18.60 m       |              |                |
| Max. outreach         | 10.30 m       |              |                |
| Max. basket load      | 200 kg        |              |                |
| Basket size           | 1.25x0.8x1.1m |              |                |
| Turnable basket       | ± 41°         |              |                |
| Rotation              | ± 400°        |              |                |
| Power supply          | 230V/16A      | Battery      | Battery/diesel |
| Batteries             |               | 24V/200Ah/5h | 24V/200Ah/5h   |
| Charger               |               | 24V/30A      | 24V/30A        |
| Diesel engine         |               |              | 14kW/18.8hp    |
| Generator             |               |              | 24V/22A        |
| Transport length      | 7.20 m        | 7.20 m       | 7.47 m         |
| Transport height      | 2.10 m        |              |                |
| Transport width       | 1.70 m        |              |                |
| Operational width     | 4.25 m        |              |                |
| Total weight          | 2230 kg       | 2350 kg      | 2480 kg        |
| Controls              | Proportional  |              |                |
| Hydraulic stabilizers | +             |              |                |
| Hydraulic propulsion  | +             |              |                |
| 230V outlet in basket | +             |              |                |

O Option

## A STABLE LIFT – ALSO DURING TRANSPORT



Angle boom



Propulsion



Easy control



Transport

- 1850E, 1850EB and 1850 EBD are identical apart from their power sources. Standard features include hydraulic stabilizers with interlocks, basket rotation and proportional controls with dual controls to ground and basket. Design features include a basket mounting that forms a "fly" boom mounted to the top boom section and gives increased outreach over obstacles. The specially designed steel booms made from high and broad profiles allow greater outreach whilst maintaining a high degree of stability and rigidity. Being shorter in travel length than most machines of this type, the 1850E-series allows improved manoeuvrability and is particularly suited when mounted on to a chassis cab.
- 1850E is mains powered 230 V/16 A and is especially suited, where continuous or extended operation is required.
- 1850EB is powered by a heavy duty 24 V battery pack with built-in charger capable of charging the batteries whilst the platform is in use. 1850EB is especially suited for jobs, without mains access.