

1700 EX



www.ommelift.com

Trailer lift - Articulated

Dealer:



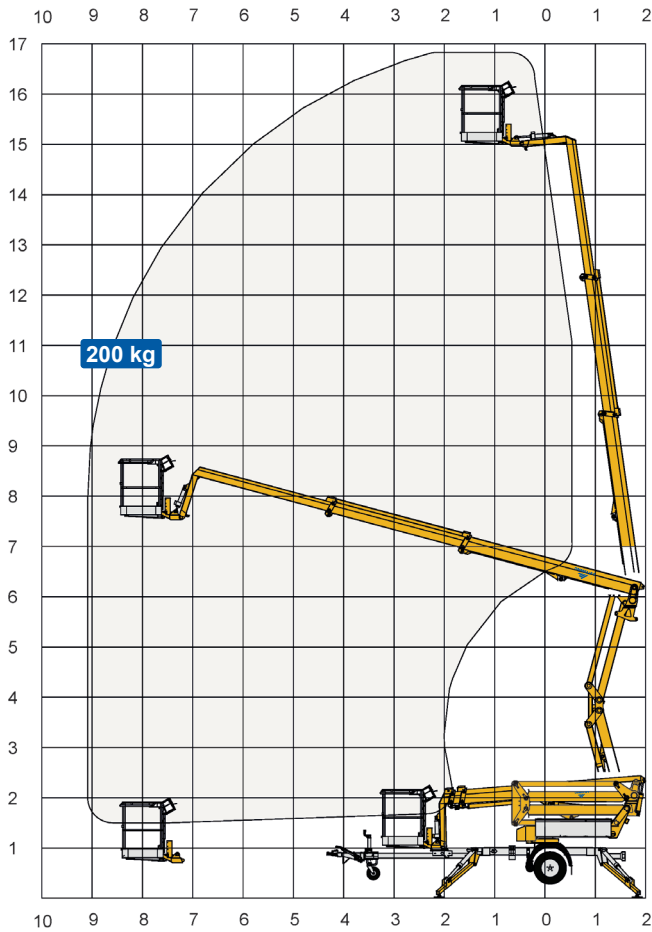
Transporel, LDA.

Rua Central Olival, nº 450, Edifício 2
Olival Porto, 4415-729, Portugal
+351 226 153 360
transporel@transporel.pt
www.transporel.pt

OMMELIFT



1700 EX Trailer lift



Technical Data:	1700 EX	1700 EXB
Max. working height	16.8 m	
Max. platform height	14.8 m	
Max. outreach	9.1 m	
Up and over clearance	6.0 m	
Angle boom length (boom + basket)	2.0 m	
Jib length (jib + basket)	-	
Vertical jib rotation	-	
Turret rotation	± 400°	
Basket rotation	± 50°	
Max. basket load	200 kg	
Basket size	1.25 x 0.8 x 1.1 m	
Stabilizer pad size	ø200 mm	
	⁵ Petrol ⁶ Diesel	230V / 16A BATTERY
Engine	⁵ Optional ⁶	⁵ Optional ⁶
Fuel tank capacity		
Generator		
Battery pack	24V/200Ah/5h	
Charger	24 V / 30 A	
Double charger system	Optional	
Elec. descent	Optional	Optional
See www.ommelift.com for more features and options		
Self-propulsion with hydraulic engagement of traction rollers	Standard	
Gradeability	14% / 8°	
Ground to tire clearance at max. set-up	Min. 300 mm (13.8% / 7.9°)	
Total weight	2060 kg	2200 kg
Ground pressure, outrigger pad	12.4 kg/cm ²	12.4 kg/cm ²
Ground pressure with 0.4 x 0.4 m spreader plate	0.7 kg/cm ²	0.7 kg/cm ²
Max. force, outrigger	10.5 kN	10.5 kN
Hydraulic stabilizers	Standard	
Controls	Proportional	
Flush basket mount	Standard	
Elec. power outlet in basket	Standard	
Tool trays in basket	Standard	

