

# 2100 E



[www.ommelift.com](http://www.ommelift.com)

## Trailer lift - Telescopic

Dealer:



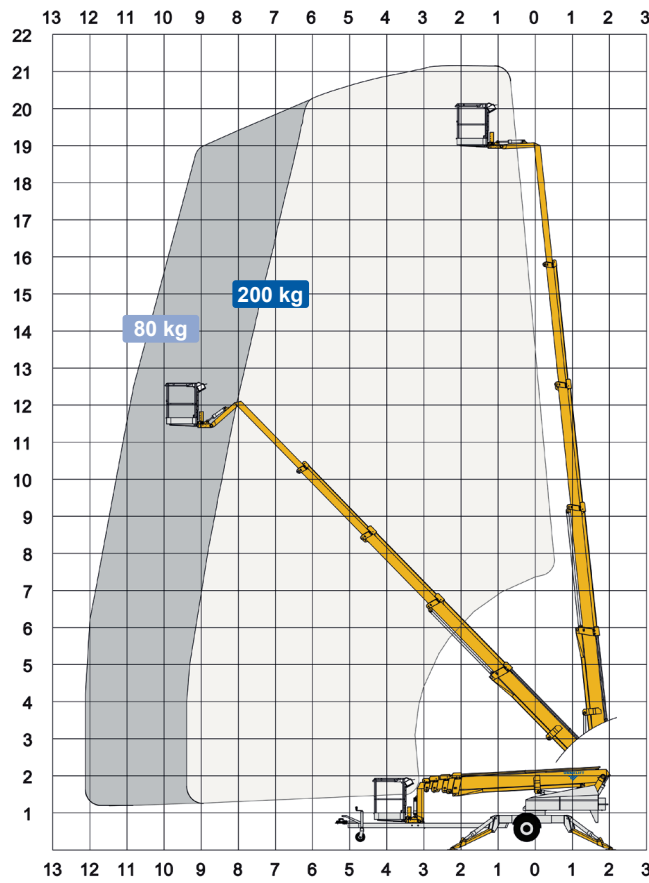
**Transporel, LDA.**

Rua Central Olival, nº 450, Edifício 2  
Olival Porto, 4415-729, Portugal  
+351 226 153 360  
[transporel@transporel.pt](mailto:transporel@transporel.pt)  
[www.transporel.pt](http://www.transporel.pt)

# OMMELIFT



# 2100 E Trailer lift



Technical Data:		2100 E	2100 EB	2100 EBD
Max. working height			21.2 m	
Max. platform height			19.2 m	
Max. outreach			12.2 m	
Up and over clearance			-	
Angle boom length (boom + basket)			2.0 m	
Jib length (jib + basket)			-	
Vertical jib rotation			-	
Turret rotation			± 400°	
Basket rotation			± 41°	
Max. basket load			200 kg	
Basket size			1.25 x 0.8 x 1.1 m	
Stabilizer pad size			ø200 mm	
	<sup>°</sup> Petrol <sup>°</sup> Diesel	<b>230V / 16A</b>	<b>BATTERY</b>	<b>HYBRID</b>
Engine		<sup>°</sup> Optional <sup>°</sup>	<sup>°</sup> Optional <sup>°</sup>	<sup>°</sup> 14kW/18.8hp
Fuel tank capacity				16 l
Generator				24 V / 22 A
Battery pack			24V/200Ah/5h	24V/200Ah/5h
Charger			24 V / 30 A	24 V / 30 A
Double charger system			Optional	Optional
Elec. descent		Optional	Optional	Optional
<a href="http://www.ommelift.com">See www.ommelift.com for more features and options</a>				
Self-propulsion with hydraulic engagement of traction rollers			Standard	
Gradeability			14% / 8°	
Ground to tire clearance at max. set-up			Min. 150 mm (8.4% / 4.8°)	
Engine only version available				
Total weight		2380 kg	2500 kg	2825 kg
Ground pressure, outrigger pad		16.0 kg/cm <sup>2</sup>	16.0 kg/cm <sup>2</sup>	16.0 kg/cm <sup>2</sup>
Ground pressure with 0.4 x 0.4 m spreader plate		0.9 kg/cm <sup>2</sup>	0.9 kg/cm <sup>2</sup>	0.9 kg/cm <sup>2</sup>
Max. force, outrigger		13.6 kN	13.6 kN	13.6 kN
Hydraulic stabilizers		Standard		
Controls		Proportional		
Flush basket mount		Standard		
Elec. power outlet in basket		Standard		
Tool trays in basket		Standard		

