

**2900 E**



[www.ommelift.com](http://www.ommelift.com)

## Trailer lift - Telescopic

Dealer:



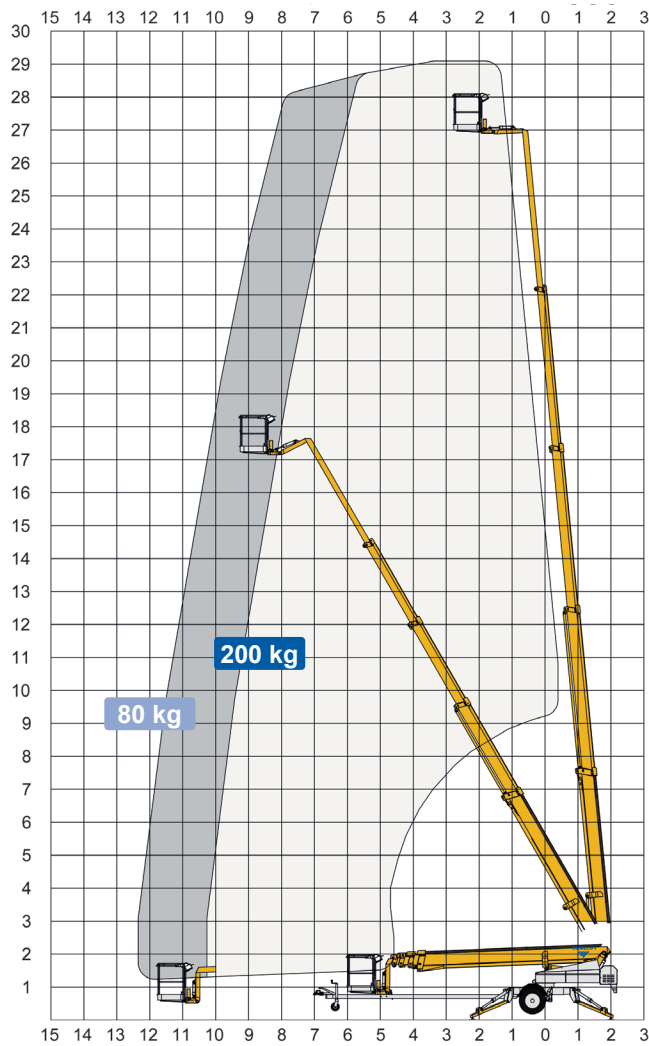
**Transporel, LDA.**

Rua Central Olival, nº 450, Edifício 2  
Olival Porto, 4415-729, Portugal  
+351 226 153 360  
[transporel@transporel.pt](mailto:transporel@transporel.pt)  
[www.transporel.pt](http://www.transporel.pt)

**OMMELIFT**



# 2900 E Trailer lift



Technical Data:	2900 E	2900 EB	2900 EBD	
Max. working height		29.0 m		
Max. platform height		27.0 m		
Max. outreach		12.3 m		
Up and over clearance		-		
Angle boom length (boom + basket)		2.0 m		
Jib length (jib + basket)		-		
Vertical jib rotation		-		
Turret rotation		± 400°		
Basket rotation		± 41°		
Max. basket load		200 kg		
Basket size		1.25 x 0.8 x 1.1 m		
Stabilizer pad size		ø200 mm		
	<sup>5</sup> Petrol <sup>6</sup> Diesel	<b>230V / 16A</b>	<b>BATTERY</b>	<b>HYBRID</b>
Engine	<sup>5</sup> Optional <sup>6</sup>	<sup>5</sup> Optional <sup>6</sup>	<sup>6</sup> 14kW/18.8hp	
Fuel tank capacity			16 l	
Generator			24 V / 22 A	
Battery pack		24V/200Ah/5h	24V/200Ah/5h	
Charger		24 V / 30 A	24 V / 30 A	
Double charger system		Optional	Optional	
Elec. descent		Optional	Optional	Optional
<a href="http://www.ommelift.com">See www.ommelift.com for more features and options</a>				
Self-propulsion with hydraulic engagement of traction rollers		Standard		
Gradeability		14% / 8°		
Ground to tire clearance at max. set-up		Min. 170 mm (9.1% / 5.2°)		
Engine only version available				
Total weight	3400 kg	3400 kg	3500 kg	
Ground pressure, outrigger pad	22.5 kg/cm <sup>2</sup>	22.5 kg/cm <sup>2</sup>	22.5 kg/cm <sup>2</sup>	
Ground pressure with 0.4 x 0.4 m spreader plate	1.2 kg/cm <sup>2</sup>	1.2 kg/cm <sup>2</sup>	1.2 kg/cm <sup>2</sup>	
Max. force, outrigger	19.1 kN	19.1 kN	19.1 kN	
Hydraulic stabilizers	Standard			
Controls	Proportional			
Flush basket mount	Standard			
Elec. power outlet in basket	Standard			
Tool trays in basket	Standard			

