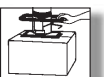




GIS electric chain hoists for 1001 jobs



Certified to ISO 9001

GIS
®

Lifting technology

Slipping clutch

Long-lasting asbestos-free slipping clutch as overload protection in the first transmission stage, for optimal safety.

Chainwheel / chain guide

Hardened chainwheel with five pockets, optimally suited to the special GIS chain. Flexible chain guide guarantees perfect operation of the entire chain drive.

Transmission

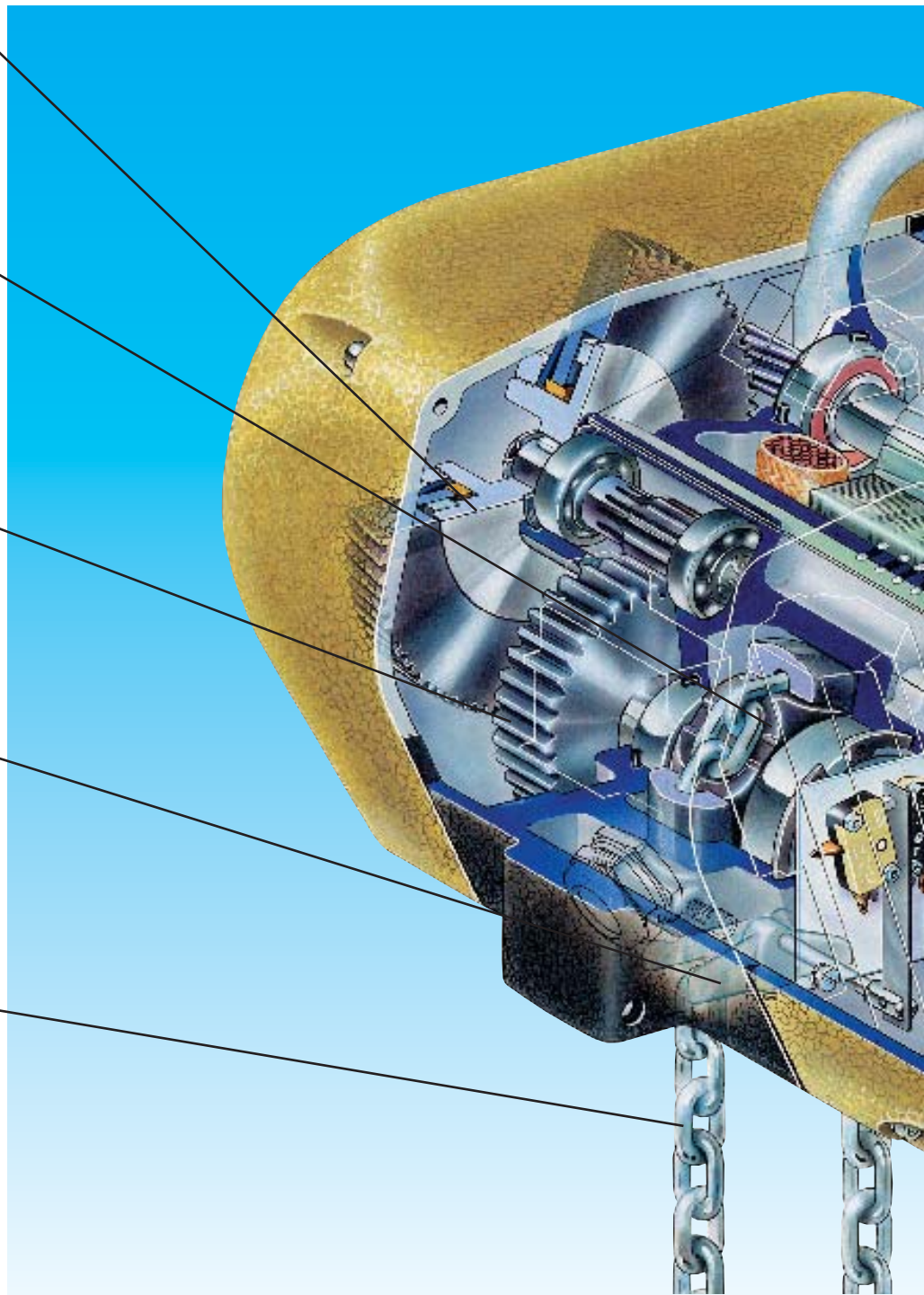
Compact multistage transmission manufactured by GIS. Hardened gears with permanent lubrication, helical-toothed first stage for quiet-running.

Limit switch

Fitted as standard with electrical limit switch for highest and lowest hook positions (control circuit). This prevents unnecessary wear of the slipping clutch.

Hoisting chain/load hook

High-tensile GIS special-grade chain, calibrated, fatigue-resistant, surface-hardened, zinc plated, quality class DAT (8 SS) to FEM 9.671. High-tensile steel hook to DIN 15401 with large jaw opening and safety catch.

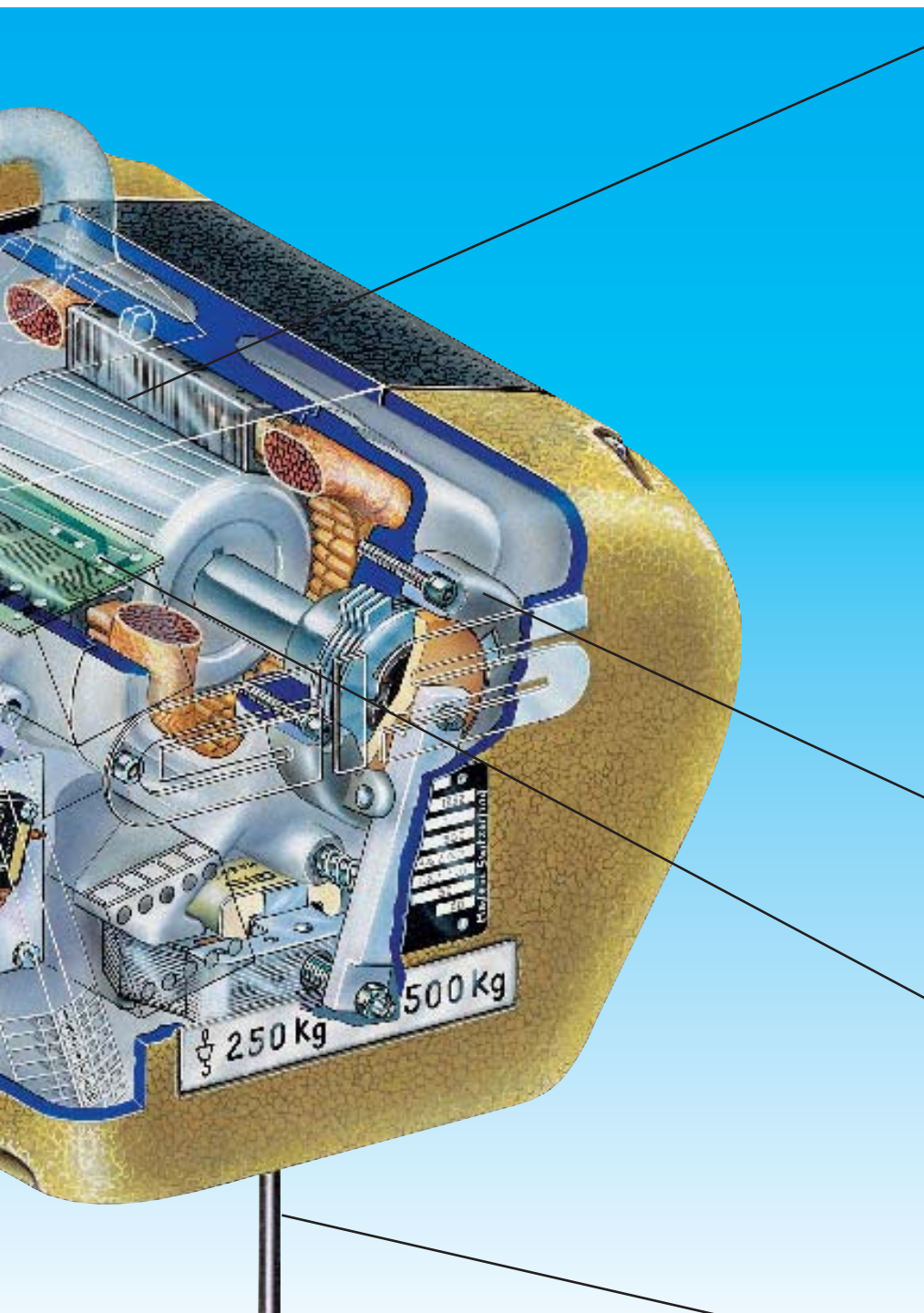


EURO-Model 2000: the right quality and performance at the right price, thanks to...

- ...optimal design down to the last detail
- ...mass production
- ...easy assembly
- ...low maintenance requirements and ease of servicing.

These outstanding features of the EURO-model 2000 were created by a team of specialists. Exploitation of these benefits in teamwork with our customers is a GIS policy.

ality down to the last detail



Motor

Cylindrical squirrel-cage motor with extremely high duty cycle and switching frequency ratings under tough conditions, designed for both normal and fast operating speeds, optionally with single or dual speeds (separate windings).

Insulation class F (motor winding temperature limit 155 °C).

Single-phase version: with capacitor start (types EM 25-500).

Overheating protection: on request.

Tropical insulation version: on request.

Voltages

Standard voltages:

3-phase 380/400 V, 50 Hz

3-phase 220/230 V, 50 Hz

3-phase 415/420 V, 50 Hz

Special voltages: on request.

Brake

Wear-resistant dry disc brake for frequent switching operation, maintenance-free.

Control

Standard 42 V contactor system with mechanical interlock, including transformer and integrated limit switch. Optimal safety for the operator thanks to low-voltage control. The contactors are set against the high duty cycle and switching frequency ratings of the motor. Push to run control optional.

Control cable/control switch

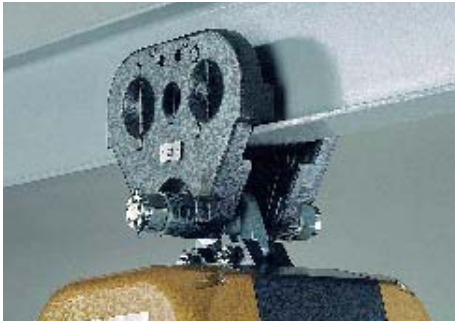
Control cable with built-in support wire. External support wire optional. Ergonomic control box with 2 or 4-button operation, with or without emergency stop, with electrical interlock. Optimal protection against electrical shock. Plastic housing with high impact strength, corrosion-resistant, weather proof, flame resistant. Also resistant to seawater, fuel oils and grease, oils and caustic liquors. Protection: IP 65 to DIN 40050.

As contractor or on-site transport manager, you can depend on GIS know-how when it comes to tough demands on our products. With us you will find the solution to all your needs.

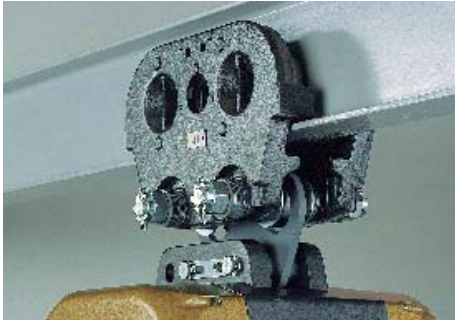
With GIS products you can count on maximum safety, absolute reliability, long service life and optimal economy. Here are the special design features of the EURO-Model 2000:

- Strong lightweight cast aluminium housing
- Modern design
- Optimal weight distribution (no counterweight required)
- Protection: IP 54 to DIN 40050 as standard (protection against the contact and penetration of dust and water spray). Other protection classes: on request.

Electric chain hoists.



Push travel trolley (EHF) up to 2000 kg



Push travel trolley (EHF) up to 5000 kg



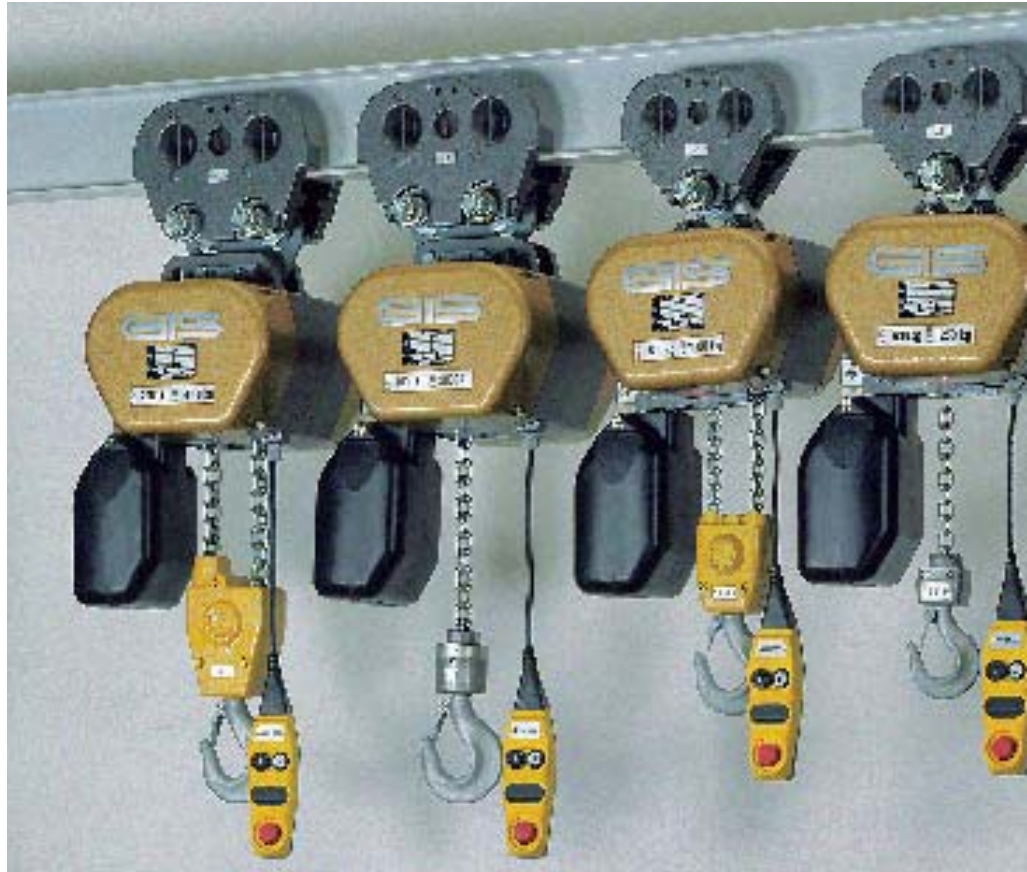
Electric travel trolley (EMF) up to 2000 kg



Electric travel trolley (EMF) up to 5000 kg



Hook-type suspension (optional)



Fixed suspension

with eyebolt (standard)

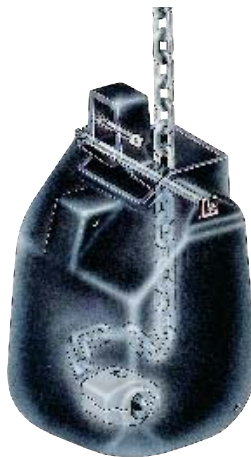
Hook-type suspension optional

Travelling suspension

with push travel trolley (EHF) or electric travel trolley (EMF), for 3-phase power supply. The trolleys are fitted as standard with 4 ball-bearing wheels and for safety with anti-dropping stops.

Various travelling speeds available.

Brake: on request



Chain bucket with pivoted suspension, in various sizes



GIS control box, 2 buttons, emergency stop optional



GIS control box, 4 buttons, with emergency stop



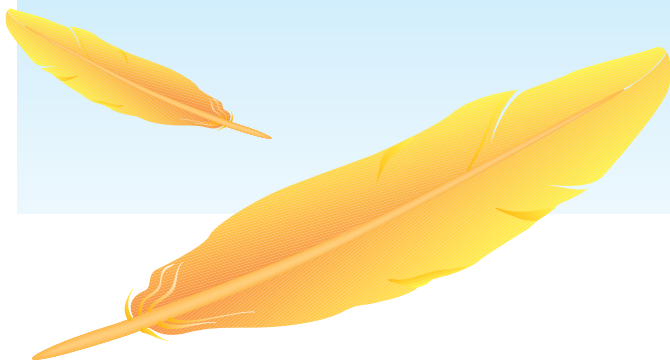
1-fall up to 2500 kg



2-fall up to 5000 kg

....for all applications





Standard GIS products are ideal for a good many lifting jobs. Customized solutions for complex handling problems are a GIS speciality.

Low headroom version

These electric chain hoists are designed for low ceilings. The chain is diverted through an additional block to increase lifting height. For large bulky loads the block spacing can be extended.

In extremely low rooms **horizontal** chain hoists are the ideal solution. In combination with the GIS crane system they make full use of available lifting height.



Synchronized electric chain hoist

The **GIS Synchron** is ideal for transporting long bulky loads. The appropriate synchronous lifting of the hoist and the accurate levelling of the two load hooks assure precise positioning of the load without undesirable rotation. Normal or reduced headroom versions available, according to space conditions. The GIS Synchron is used in the automobile and printing industries among other applications. Two electrically and mechanically linked electric chain hoists with **a total of four falls** prevent undesirable rotation or tilting. This allows synchronized raising and lowering of large awkward loads.



Handy Chain and Telescope models

The **Handy chain model** is ideal for cost-effective transport of small loads such as crates or containers. Higher hoisting speed and creep speed as standard allow precise load positioning. Since the control unit is fixed to the load suspension device, loads can easily be transported with one hand only. Various suspension attachments can be fitted.

The **Handy telescope model** has an additional extending guide tube to stabilize hoisting and lowering for extremely precise load positioning. A common application of this model is for placing workpieces on machine-tools. A special attachment is available for eccentric lifting.

Together with slewing or overhead cranes, these handy models make working much easier.



Corrosion-resistant electric chain hoist

Demands in the food industry (e.g. cheesemaking or meat processing) are particularly stringent. Corrosion-resistant electric chain hoists are ideal for such applications.

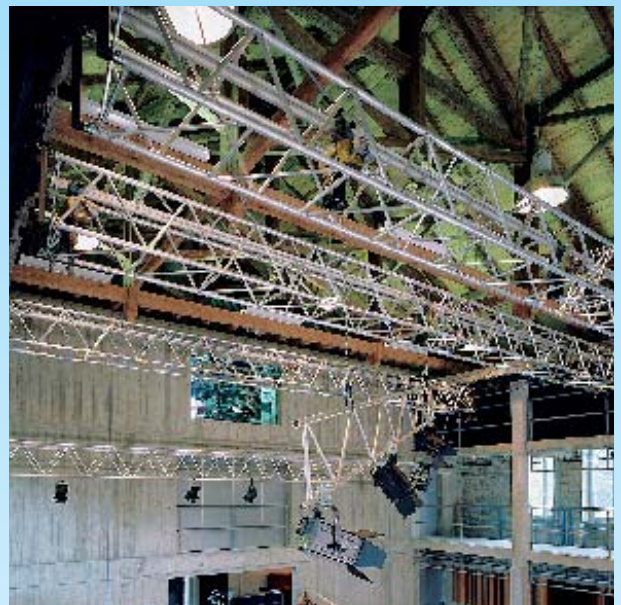
Likewise in sewage plants and some sectors of the chemical industry, they offer valuable advantages.



Electric chain hoist for theatres, stages and studios

Electric chain hoists are frequently used for mounting spotlights in theatres, opera houses, TV studios or shopping centres. Since there are often people underneath a moving load, this hoisting equipment may be subject to professional safety regulations according to **VBG 70**.

These chain hoists can also be used **as climbing hoist** if desired, suspended from the load hook.

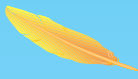




Vacuumlifter with electric chain hoist

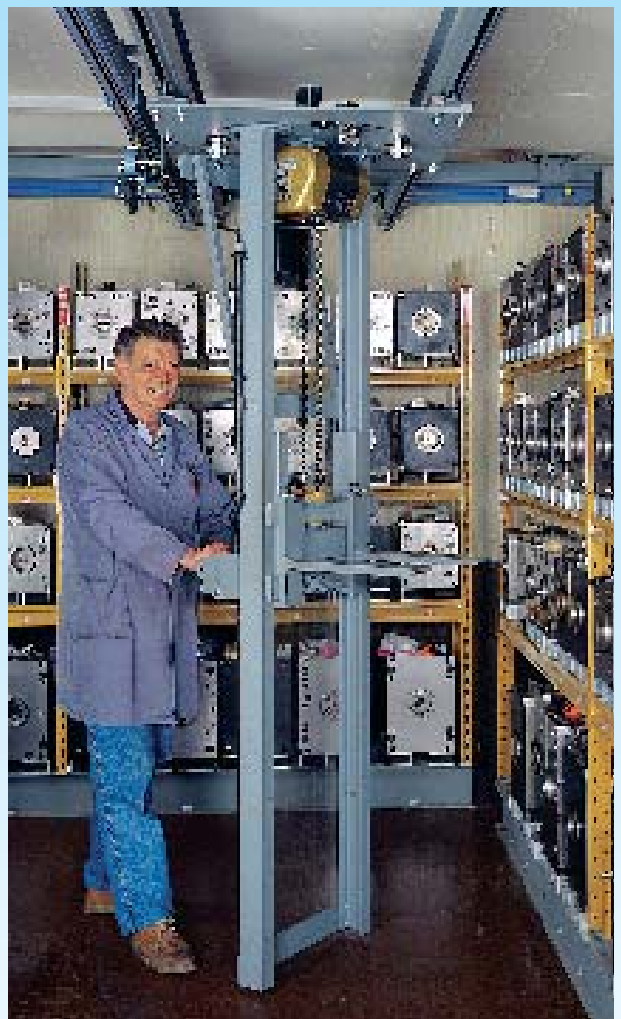
Due to the vacuum generated, these devices can be used for lifting loads with different surface qualities, weights and sizes, such as carton boxes, cheese, timber beams, sheet metal, masonry or sheets of wood. Raising and lowering is carried out by electric chain hoist, and lateral movement by GIS crane system. Thanks to the modular design of the vacuum device, various types of loads can be handled simply by changing the suction surface. The central control unit needs no additional switch for the chain hoist. Safety is priority number one when using vacuum lifting devices, for example they are fitted as standard with optical and acoustic warning devices.

Please ask for our separate brochure.

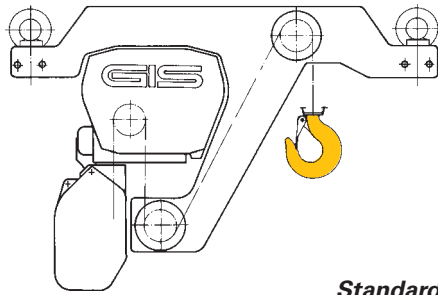


Shelf storage and retrieval units with electric chain hoist

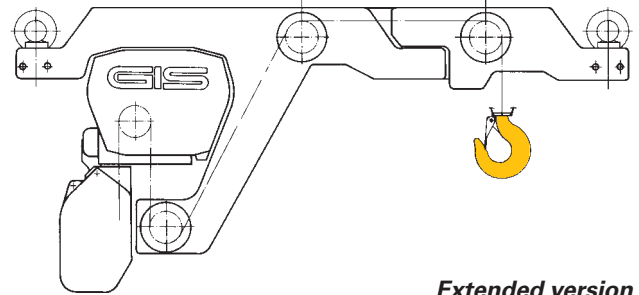
This makes pallet and slab handling fast and easy. Goods can be transported and stored or retrieved at one go. The unit swivels full-circle for use in parallel space-saving shelf layouts. The crane system allows manual or electric traversing. Goods are raised and lowered by a user-friendly GIS electric chain hoist. Full use is made of room height without interference by ladders or the like. All functions are controlled from a central unit. The rigid guide system ensures precise load positioning. With forklift for pallets or in combination with vacuum lifter for plates/sheets, this shelf storage and retrieval unit is a comprehensive, cost-effective and efficient overall solution.



Low headroom construction (EMK) and horizontal version (EML)



Standard version



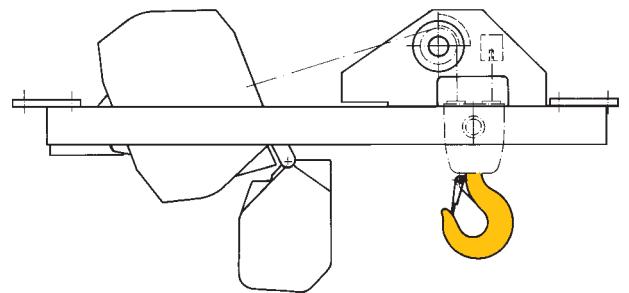
Extended version

Low headroom construction (EMK), standard and extended versions

- For low head rooms
- For loads up to 3200 kg
- Extended version for bulky goods

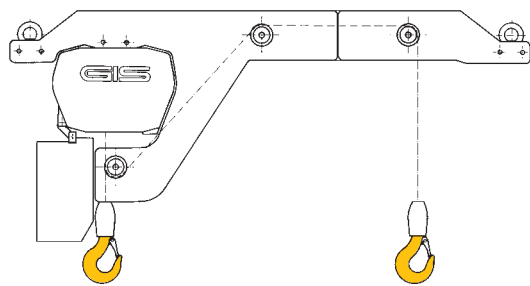
Horizontal position (EML)

- For extremely low head rooms
- For loads up to max. 630 kg
- In combination with GIS crane system

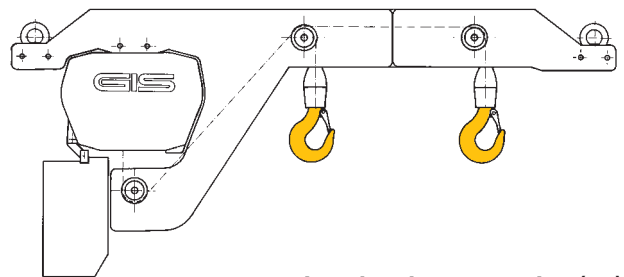


Horizontal position

Synchronized electric chain hoist (EMS)



Standard version (au)



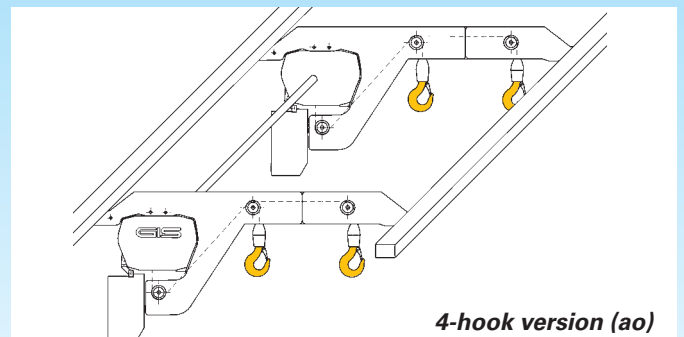
Low head room version (ao)

GIS Synchron (EMS) normal version (au) and low version (ao)

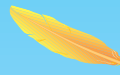
- Hooks in bottom position for standard version (au)
- Hooks in top position for low head room version (ao)
- Synchronous lifting of the two load hooks
- Load 2 x 100 to max. 2 x 1250 kg
- Adjustable hook levelling
- Hook spacing to your requirements

GIS Synchron 4-hook

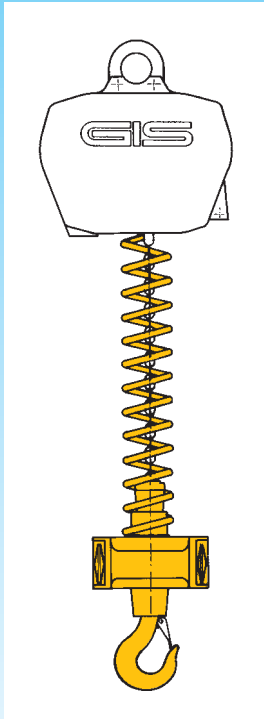
- Versions (au) or (ao)
- Synchronous lifting of the four load hooks
- Load 4 x 100 to max. 4 x 1000 kg
- Levelling of two hooks adjustable
- Electric hoists linked by cardan shaft
- Hook spacing to your requirements



4-hook version (ao)

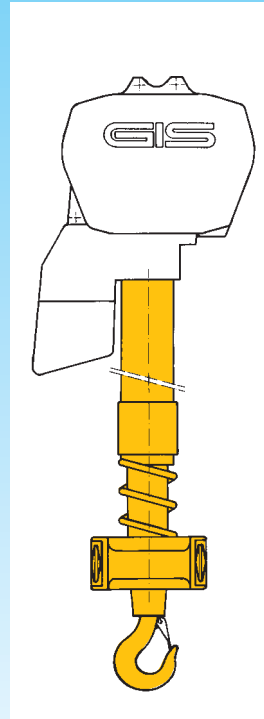


Handy Chain (EMHK) and Telescope (EMHT) models



GIS Handy Chain model (EMHK)

- Control unit adjacent to load, left or right hand operation
- Various suspension attachments can be fitted
- Combinable with slewing or overhead cranes
- Max. load 125 or 250 kg
- Fast hoisting speed
- All versions with high-speed and creep speed

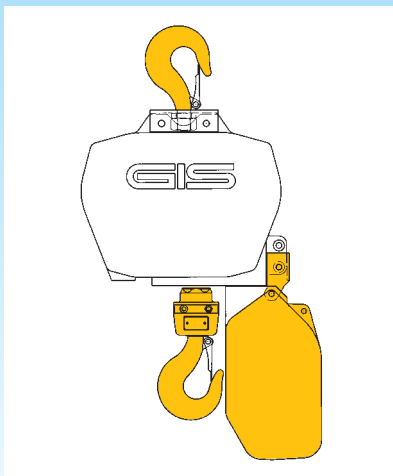


GIS Handy Telescope single (EMHTE) and double (EMHTD)

- Guide tube stabilizes hoisting and lowering
- Lifting height 0.8 to 2.0 m
- Eccentric load lifting
- EMHTD version for lower head-room at same lifting height
- Other data as for EMHK

Corrosion-resistant electric chain hoist (EMR)

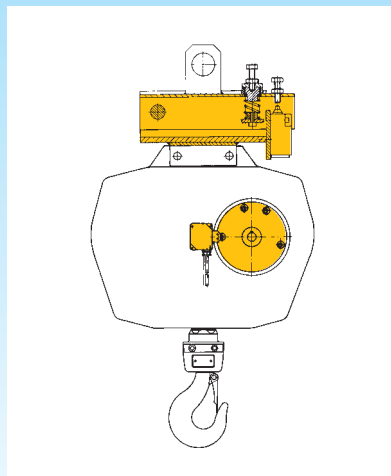
- Hook, chain and chain equipment of stainless steel
- Aluminium housing with acid-resistant paint finish and corrosion-free screws
- Red-brown hammer finish
- Max. load 630 kg
- Hook-type suspension



Electric chain hoist for theatres, stages and studios (EMB, EMC)

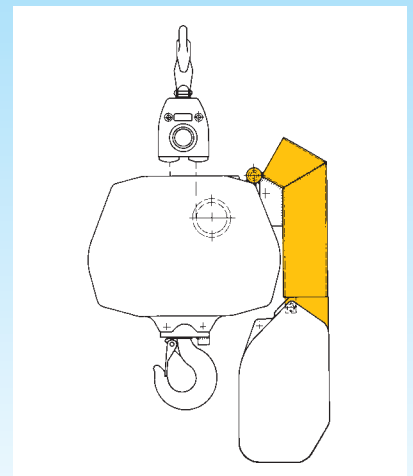
Execution to VBG 70 (EMB)

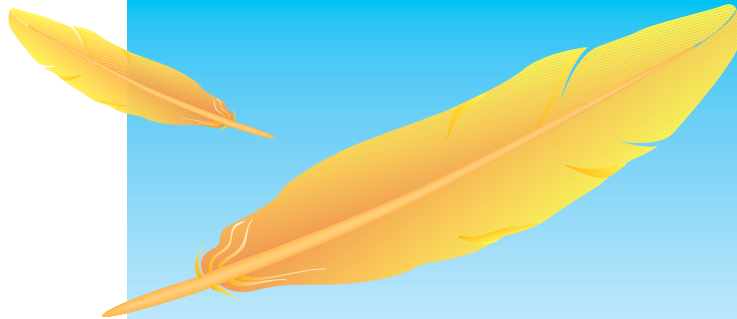
- Independent second braking system
- Limit switches for upper and lower hook positions
- Chain static safety factor at least 12
- Slack chain shutoff switch



Climbing hoist (EMC)

- Special chain run guide
- Load hook is used as suspension hook
- For easier erection work with high lifts
- Combinable with VBG 70 version





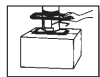
With GIS you can rely on a well-rounded product range

GIS electric chain hoists offer you the best as standard. For safety reasons, all models have low voltage control and electrical limit switch for highest and lowest hook positions. GIS electric chain hoists are used in combination with slewing cranes, GIS overhead rails and cranes, and standard shop cranes running on I-beam steel girders. For further details, please see our technical documentation.

**Apart from electric chain hoists, GIS is also
your partner for:**



Advanced crane technology



Efficient vacuum lifting technology

**Ask for our brochures and questionnaires.
We are at your disposal.**



Lifting made easy with

GIS[®]

GIS AG

Hebe- und Fördertechnik
Luzernerstrasse 50
CH-6247 Schötz
Tel. 041 980 00 71, Fax 041 980 16 06

GIS GmbH

Hebe- und Fördertechnik
Feldbergstrasse 17
D-79689 Maulburg
Tel. 07622 6773-0, Fax 07622 610 19

Lifting technology