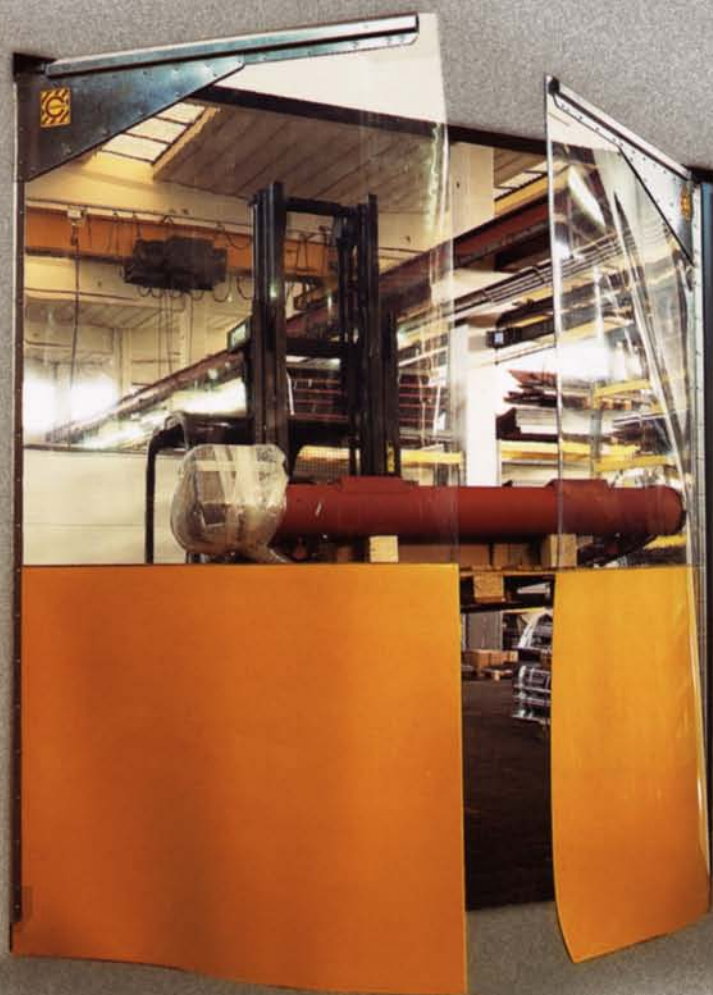


WING e LINEAR





WING doors are the economic solution to closing a door without interfering with the ease of crossing its threshold. They can be supplied with transparent or partially opaque panels, which offer security, practicality of use and unhindered light.

WING

WING DOORS.

In order to solve the problem of the 'ever open' door, CAMPISA have put at the customers' disposal their manufacturing experience since the early 1970's, producing automatic systems allowing for the better movement of goods. WING flexible doors represent one of the most simple and cheap solutions of the manual version, or more functional and efficient when fitted with automatic electro-pneumatic operation: WING, in this instance, is the door which 'exists but does not exist'.

The profile of the door is fabricated from sheet steel, folded in a way to give the structure maximum rigidity, while the panel is reinforced at points of greater stress.



WING doors can be operated manually, with a mechanical closing, or be automated by way of electro-pneumatic cylinders.





LINEAR strip closures, allow for the separation or division of work places, with a simple and cheap system, which provides an easy crossing, while maintaining unhindered vision.



LINEAR

LINEAR STRIP CLOSURES.

LINEAR is the system which allows for the most adaptable of uses. It represents one of the easiest and economic solutions when used as a simple closure, but its modular form offers the possibility to be used for wide separations, or the division of industrial units, etc., providing a through isolating wall without reducing visibility and having the possibility to cross it at any place. Lay-out can in this way be modified without large alterations and expenditure, aspects which would be required by any other fixed structure. LINEAR, the closure which 'exists but does not exist'.

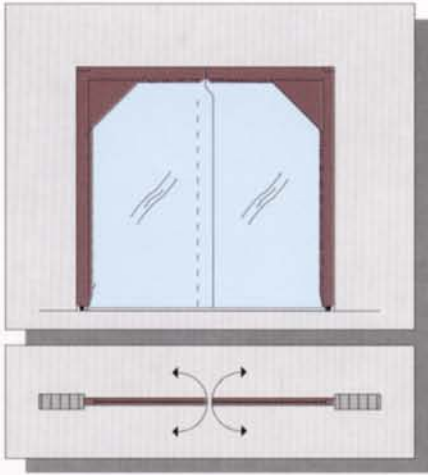
The entire LINEAR strip closure can slide laterally along the rail in order to completely clear the opening.



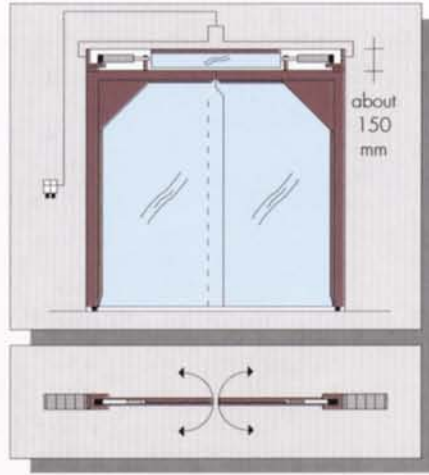
During periods of non-use, or where the division is required to remain open for some time, it is possible with this system to manually pack the strips to the side, keeping them in their natural hanging position.



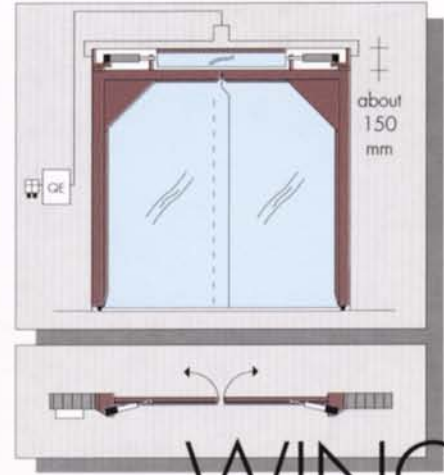
MANUAL



SEMI-AUTOMATIC



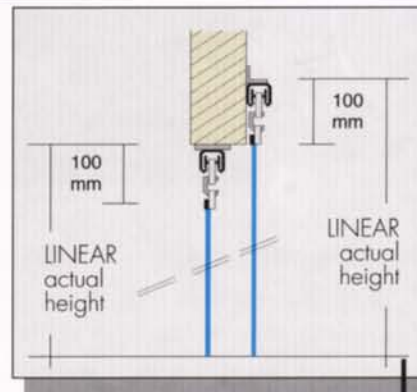
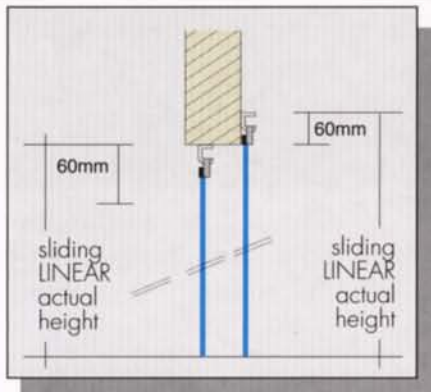
AUTOMATIC



WING

TECHNICAL DETAILS

- Galvanised steel structure (AISI 304 stainless steel on request.)
- Mechanical close-again systems by way of torsion springs.
- 5mm or 7mm thick transparent PVC panel.
- Optional matt coloured PVC, or 9mm thick black rubber, to bottom parts and headings.
- Optional semi-automatic touch control opening systems operated by pneumatic cylinders, (2-4 bar pressure required).
- Optional automatic opening systems by electro-pneumatic cylinders, 240 V 0,5 A, and remotely controlled.

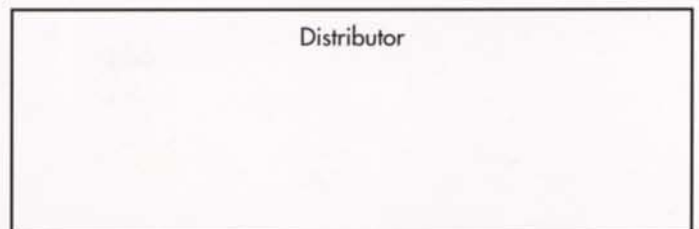


LINEAR

TECHNICAL DETAILS

- Galvanised steel supports (AISI 304 stainless steel on request) with rapid hanging and removal of the strips.
- PVC transparent strips with rounded edges available in the following dimensions (mm):

Strip	Partial overlap		Total overlap
200 x 2	50 + 50	-	100 + 100
300 x 3	50 + 50	100 + 100	150 + 150
400 x 3	50 + 50	100 + 100	200 + 200
400 x 4	50 + 50	100 + 100	200 + 200
200 x 2 frigo	50 + 50	-	100 + 100
300 x 3 frigo	50 + 50	100 + 100	150 + 150



CAMPISA srl

13, via Ruffini 20030 Palazzolo Milanese (MI) Italia
 Tel. +39-02.99.03.971 serie - Fax +39-02.99.04.43.51
<http://www.campisa.it> e-mail: sales@campisa.it